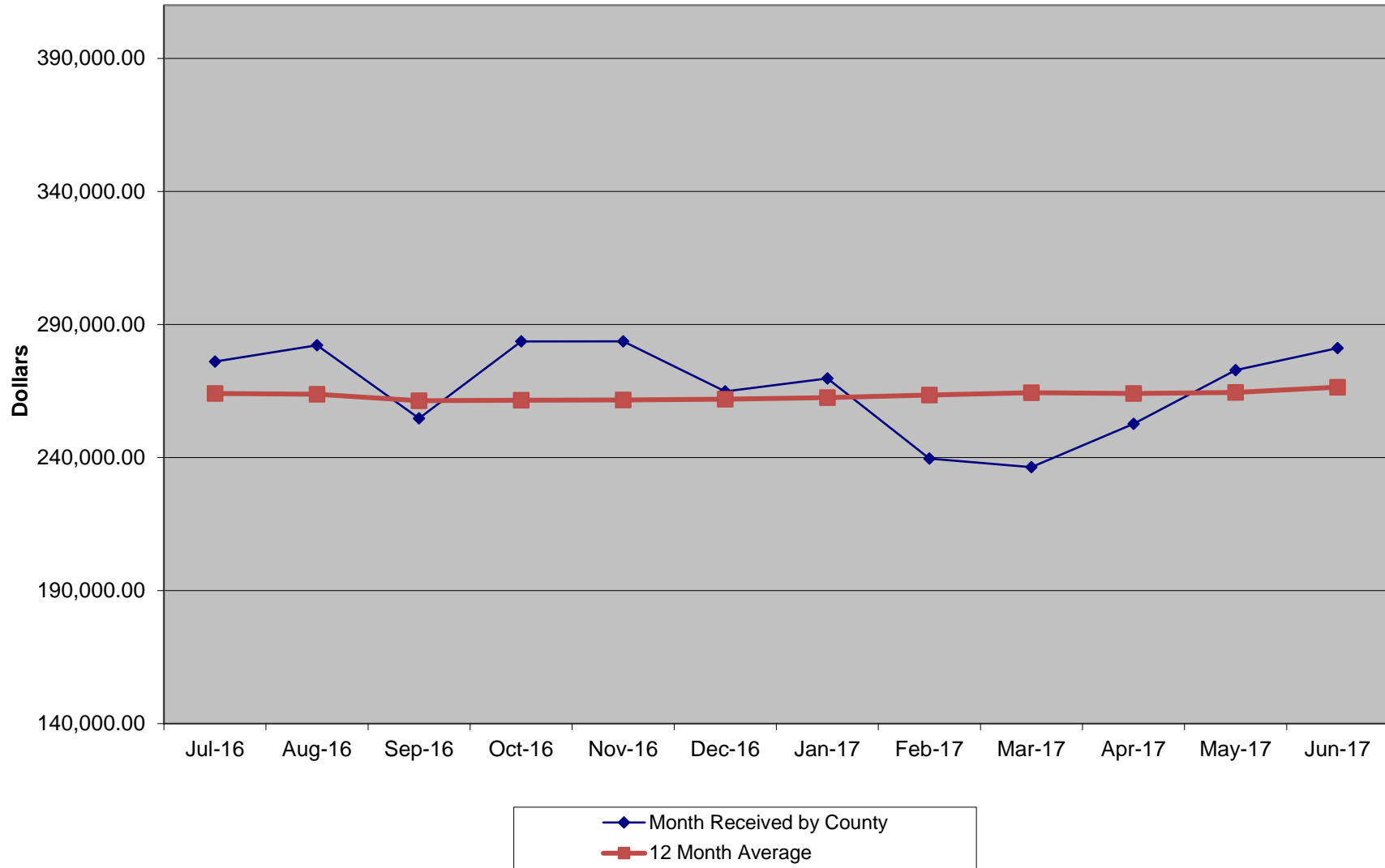


SPECIAL PURPOSE LOCAL OPTION SALES TAX COLLECTIONS

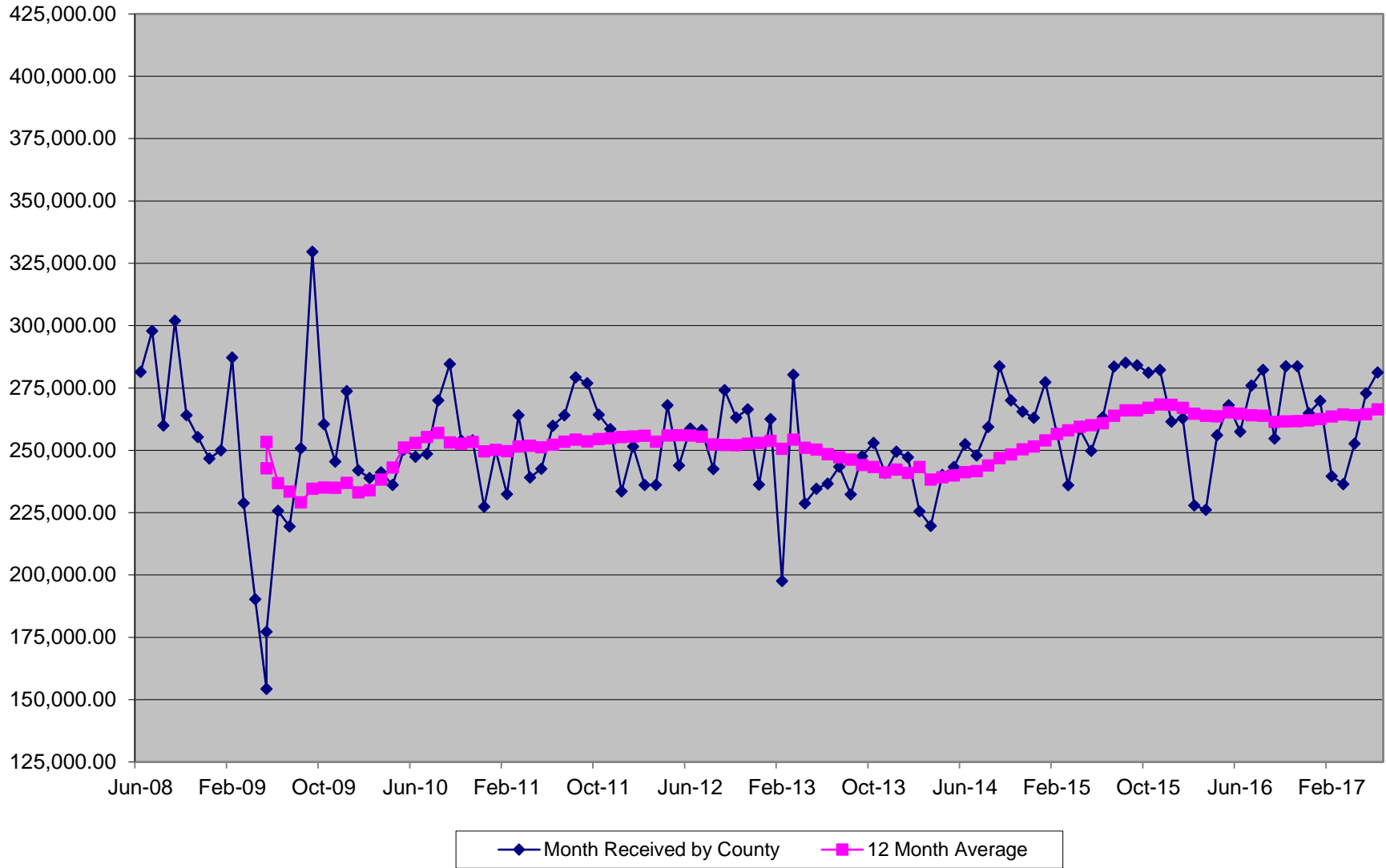


MONTH RECEIVED	AMOUNT (INCLUDING PRO-RATA DISTRIBUTIONS)
Jun-08	281,380.49
Jul-08	297,824.89
Aug-08	259,954.48
Sep-08	301,955.00
Oct-08	264,102.21
Nov-08	255,328.40
Dec-08	246,722.32
Jan-09	250,029.90
Feb-09	287,154.81
Mar-09	228,858.12
Apr-09	190,279.49
May-09	177,256.27
May-09	154,268.22
Jun-09	225,724.66
Jul-09	219,469.37
Aug-09	250,783.39
Sep-09	329,582.33
Oct-09	260,424.32
Nov-09	245,438.55
Dec-09	273,743.19
Jan-10	241,930.28
Feb-10	238,907.56
Mar-10	241,101.63
Apr-10	236,134.38
May-10	250,275.85
Jun-10	247,438.93
Jul-10	248,506.39
Aug-10	270,044.74
Sep-10	284,636.98
Oct-10	253,939.12
Nov-10	253,999.07
Dec-10	227,362.93
Jan-11	250,030.67
Feb-11	232,373.84
Mar-11	264,053.73
Apr-11	239,069.50
May-11	242,575.74
Jun-11	259,884.19
Jul-11	264,048.87
Aug-11	279,297.14
Sep-11	276,887.77
Oct-11	264,252.08
Nov-11	258,494.35
Dec-11	233,522.37
Jan-12	251,551.95
Feb-12	236,096.56
Mar-12	236,162.82

Apr-12	268,067.04
May-12	243,934.54
Jun-12	258,700.74
Jul-12	258,144.14
Aug-12	242,450.91
Sep-12	274,106.78
Oct-12	263,174.92
Nov-12	266,419.71
Dec-12	236,262.49
Jan-13	262,477.54
Feb-13	197,623.16
Mar-13	280,285.77
Apr-13	228,694.58
May-13	234,612.35
Jun-13	236,583.71
Jul-13	243,360.47
Aug-13	232,297.10
Sep-13	247,603.42
Oct-13	252,928.32
Nov-13	240,973.17
Dec-13	249,479.74
Jan-14	247,227.13
Feb-14	225,554.96
Mar-14	219,627.05
Apr-14	240,163.18
May-14	243,347.04
Jun-14	252,453.01
Jul-14	247,973.00
Aug-14	259,296.67
Sep-14	283,662.80
Oct-14	270,021.47
Nov-14	265,541.45
Dec-14	263,004.13
Jan-15	277,282.73
Feb-15	256,752.07
Mar-15	236,010.08
Apr-15	258,473.82
May-15	249,762.32
Jun-15	263,213.12
Jul-15	283,549.38
Aug-15	285,115.79
Sep-15	284,063.18
Oct-15	281,161.13
Nov-15	282,298.44
Dec-15	261,458.36
Jan-16	262,853.01
Feb-16	227,903.95
Mar-16	226,182.72
Apr-16	256,051.76
May-16	268,027.66
Jun-16	257,475.26
Jul-16	276,021.55

Aug-16	282,206.65
Sep-16	254,704.63
Oct-16	283,644.11
Nov-16	283,642.79
Dec-16	264,843.62
Jan-17	269,773.65
Feb-17	239,576.47
Mar-17	236,385.55
Apr-17	252,644.75
May-17	272,869.84
Jun-17	281,180.95
Jul-17	
Aug-17	

SPECIAL PURPOSE LOCAL OPTION SALES TAX COLLECTIONS



MONTH RECEIVED AMOUNT 12 MO AVG

Jun-08	281,380.49	
Jul-08	297,824.89	
Aug-08	259,954.48	
Sep-08	301,955.00	
Oct-08	264,102.21	
Nov-08	255,328.40	
Dec-08	246,722.32	
Jan-09	250,029.90	
Feb-09	287,154.81	
Mar-09	228,858.12	
Apr-09	190,279.49	
May-09	177,256.27	253,403.87
May-09	154,268.22	242,811.18
Jun-09	225,724.66	236,802.82
Jul-09	219,469.37	233,429.06
Aug-09	250,783.39	229,164.76
Sep-09	329,582.33	234,621.44
Oct-09	260,424.32	235,046.10
Nov-09	245,438.55	234,939.12
Dec-09	273,743.19	236,915.23
Jan-10	241,930.28	233,146.52
Feb-10	238,907.56	233,983.97
Mar-10	241,101.63	238,219.15
Apr-10	236,134.38	243,125.66
May-10	250,275.85	251,126.29
Jun-10	247,438.93	252,935.82
Jul-10	248,506.39	255,355.57
Aug-10	270,044.74	256,960.68
Sep-10	284,636.98	253,215.23
Oct-10	253,939.12	252,674.80
Nov-10	253,999.07	253,388.18
Dec-10	227,362.93	249,523.16
Jan-11	250,030.67	250,198.19
Feb-11	232,373.84	249,653.71
Mar-11	264,053.73	251,566.39
Apr-11	239,069.50	251,810.98
May-11	242,575.74	251,169.30
Jun-11	259,884.19	252,206.41
Jul-11	264,048.87	253,501.62
Aug-11	279,237.14	254,272.65
Sep-11	276,887.77	253,626.88
Oct-11	264,252.08	254,486.29
Nov-11	258,494.35	254,860.90
Dec-11	233,522.37	255,374.19
Jan-12	251,551.95	255,500.96
Feb-12	236,096.56	255,811.19
Mar-12	236,162.82	253,486.95
Apr-12	268,067.04	255,903.41
May-12	243,934.54	256,016.64
Jun-12	258,700.74	255,918.02
Jul-12	259,144.14	255,425.96
Aug-12	242,450.91	252,355.44
Sep-12	274,106.78	252,123.69
Oct-12	263,174.92	252,033.93
Nov-12	266,419.71	252,694.37
Dec-12	236,262.49	252,922.72
Jan-13	262,477.54	253,833.18
Feb-13	197,623.16	250,627.07
Mar-13	280,285.77	254,303.98
Apr-13	229,694.58	251,022.94
May-13	234,612.35	250,246.09
Jun-13	236,583.71	248,403.01
Jul-13	243,360.47	247,171.03
Aug-13	232,297.10	246,324.88
Sep-13	247,603.42	244,116.27
Oct-13	252,928.32	243,262.39
Nov-13	240,973.17	241,141.84
Dec-13	249,479.74	242,243.28
Jan-14	247,227.13	240,972.41
Feb-14	225,554.96	243,300.06
Mar-14	219,627.05	238,245.17
Apr-14	240,163.18	239,200.88
May-14	243,347.04	239,928.77
Jun-14	252,453.01	241,251.22
Jul-14	247,973.00	241,635.59
Aug-14	259,296.67	243,885.56
Sep-14	283,662.80	246,890.51
Oct-14	270,021.47	248,314.94
Nov-14	265,541.45	250,362.29
Dec-14	263,004.13	251,489.32
Jan-15	277,292.73	253,993.96
Feb-15	256,752.07	256,593.72
Mar-15	236,010.08	257,958.97
Apr-15	258,473.82	259,484.86
May-15	249,762.32	260,019.46
Jun-15	263,213.12	260,916.14
Jul-15	283,549.38	263,880.84
Aug-15	285,115.79	266,032.43
Sep-15	284,063.18	266,065.80
Oct-15	281,161.13	266,994.10
Nov-15	282,298.44	268,390.52
Dec-15	261,458.36	268,261.70
Jan-16	262,853.01	267,059.23
Feb-16	227,903.95	264,655.22
Mar-16	226,182.72	263,836.27
Apr-16	256,051.76	263,634.43
May-16	268,027.66	265,156.54
Jun-16	257,475.26	264,678.39
Jul-16	276,021.55	264,051.07
Aug-16	282,206.65	263,808.64
Sep-16	254,704.63	261,362.09
Oct-16	283,644.11	261,569.01
Nov-16	283,642.79	261,681.04
Dec-16	264,843.62	261,963.14
Jan-17	269,773.65	262,539.86
Feb-17	239,576.47	263,512.57
Mar-17	236,385.55	264,362.81
Apr-17	252,644.75	264,078.89
May-17	272,869.84	264,482.41
Jun-17	281,180.95	266,457.88
Jul-17		243,456.08
Aug-17		219,938.86