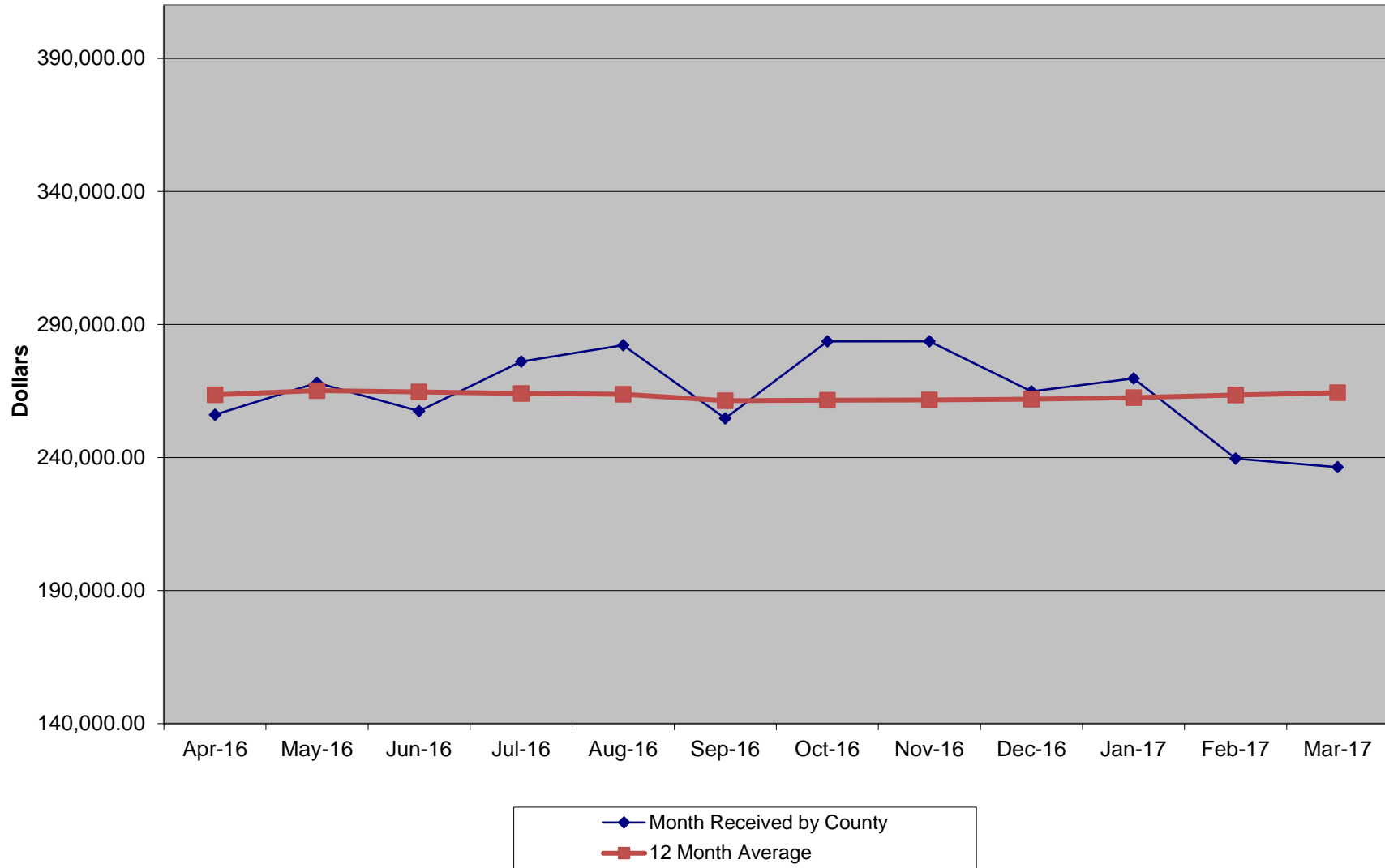


SPECIAL PURPOSE LOCAL OPTION SALES TAX COLLECTIONS

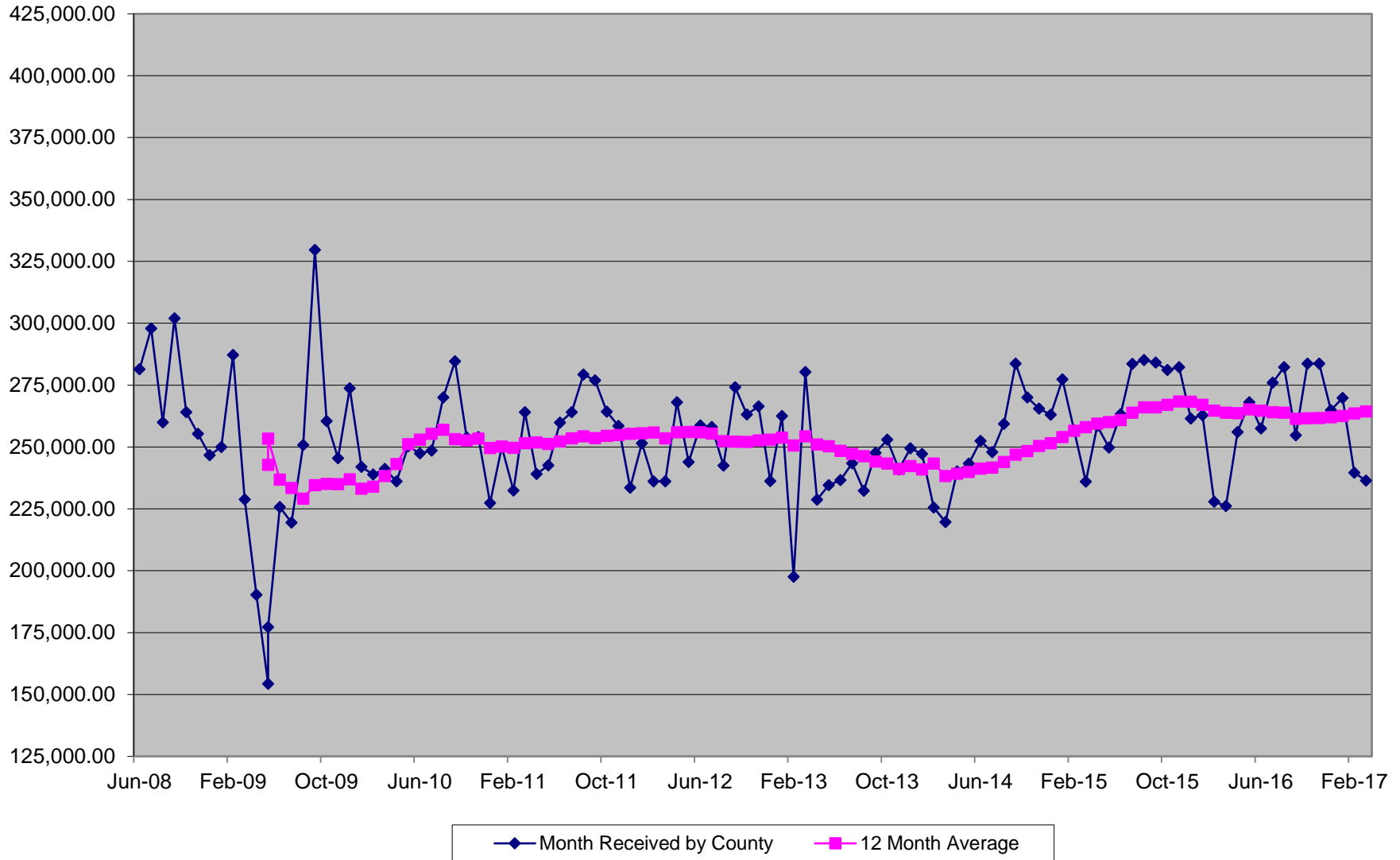


| MONTH RECEIVED | AMOUNT (INCLUDING PRO-RATA DISTRIBUTIONS) |
|----------------|---|
| Jun-08 | 281,380.49 |
| Jul-08 | 297,824.89 |
| Aug-08 | 259,954.48 |
| Sep-08 | 301,955.00 |
| Oct-08 | 264,102.21 |
| Nov-08 | 255,328.40 |
| Dec-08 | 246,722.32 |
| Jan-09 | 250,029.90 |
| Feb-09 | 287,154.81 |
| Mar-09 | 228,858.12 |
| Apr-09 | 190,279.49 |
| May-09 | 177,256.27 |
| May-09 | 154,268.22 |
| Jun-09 | 225,724.66 |
| Jul-09 | 219,469.37 |
| Aug-09 | 250,783.39 |
| Sep-09 | 329,582.33 |
| Oct-09 | 260,424.32 |
| Nov-09 | 245,438.55 |
| Dec-09 | 273,743.19 |
| Jan-10 | 241,930.28 |
| Feb-10 | 238,907.56 |
| Mar-10 | 241,101.63 |
| Apr-10 | 236,134.38 |
| May-10 | 250,275.85 |
| Jun-10 | 247,438.93 |
| Jul-10 | 248,506.39 |
| Aug-10 | 270,044.74 |
| Sep-10 | 284,636.98 |
| Oct-10 | 253,939.12 |
| Nov-10 | 253,999.07 |
| Dec-10 | 227,362.93 |
| Jan-11 | 250,030.67 |
| Feb-11 | 232,373.84 |
| Mar-11 | 264,053.73 |
| Apr-11 | 239,069.50 |
| May-11 | 242,575.74 |
| Jun-11 | 259,884.19 |
| Jul-11 | 264,048.87 |
| Aug-11 | 279,297.14 |
| Sep-11 | 276,887.77 |
| Oct-11 | 264,252.08 |
| Nov-11 | 258,494.35 |
| Dec-11 | 233,522.37 |
| Jan-12 | 251,551.95 |
| Feb-12 | 236,096.56 |
| Mar-12 | 236,162.82 |

| | |
|--------|------------|
| Apr-12 | 268,067.04 |
| May-12 | 243,934.54 |
| Jun-12 | 258,700.74 |
| Jul-12 | 258,144.14 |
| Aug-12 | 242,450.91 |
| Sep-12 | 274,106.78 |
| Oct-12 | 263,174.92 |
| Nov-12 | 266,419.71 |
| Dec-12 | 236,262.49 |
| Jan-13 | 262,477.54 |
| Feb-13 | 197,623.16 |
| Mar-13 | 280,285.77 |
| Apr-13 | 228,694.58 |
| May-13 | 234,612.35 |
| Jun-13 | 236,583.71 |
| Jul-13 | 243,360.47 |
| Aug-13 | 232,297.10 |
| Sep-13 | 247,603.42 |
| Oct-13 | 252,928.32 |
| Nov-13 | 240,973.17 |
| Dec-13 | 249,479.74 |
| Jan-14 | 247,227.13 |
| Feb-14 | 225,554.96 |
| Mar-14 | 219,627.05 |
| Apr-14 | 240,163.18 |
| May-14 | 243,347.04 |
| Jun-14 | 252,453.01 |
| Jul-14 | 247,973.00 |
| Aug-14 | 259,296.67 |
| Sep-14 | 283,662.80 |
| Oct-14 | 270,021.47 |
| Nov-14 | 265,541.45 |
| Dec-14 | 263,004.13 |
| Jan-15 | 277,282.73 |
| Feb-15 | 256,752.07 |
| Mar-15 | 236,010.08 |
| Apr-15 | 258,473.82 |
| May-15 | 249,762.32 |
| Jun-15 | 263,213.12 |
| Jul-15 | 283,549.38 |
| Aug-15 | 285,115.79 |
| Sep-15 | 284,063.18 |
| Oct-15 | 281,161.13 |
| Nov-15 | 282,298.44 |
| Dec-15 | 261,458.36 |
| Jan-16 | 262,853.01 |
| Feb-16 | 227,903.95 |
| Mar-16 | 226,182.72 |
| Apr-16 | 256,051.76 |
| May-16 | 268,027.66 |
| Jun-16 | 257,475.26 |
| Jul-16 | 276,021.55 |

| | |
|--------|------------|
| Aug-16 | 282,206.65 |
| Sep-16 | 254,704.63 |
| Oct-16 | 283,644.11 |
| Nov-16 | 283,642.79 |
| Dec-16 | 264,843.62 |
| Jan-17 | 269,773.65 |
| Feb-17 | 239,576.47 |
| Mar-17 | 236,385.55 |
| Apr-17 | |
| May-17 | |
| Jun-17 | |
| Jul-17 | |
| Aug-17 | |

SPECIAL PURPOSE LOCAL OPTION SALES TAX COLLECTIONS



MONTH RECEIVED AMOUNT 12 MO AVG

| | | |
|--------|------------|------------|
| Jun-08 | 281,380.49 | |
| Jul-08 | 297,824.89 | |
| Aug-08 | 259,954.48 | |
| Sep-08 | 301,955.00 | |
| Oct-08 | 264,102.21 | |
| Nov-08 | 255,328.40 | |
| Dec-08 | 246,722.32 | |
| Jan-09 | 250,029.90 | |
| Feb-09 | 287,154.81 | |
| Mar-09 | 228,858.12 | |
| Apr-09 | 190,279.49 | |
| May-09 | 177,256.27 | 253,403.87 |
| May-09 | 154,268.22 | 242,811.18 |
| Jun-09 | 225,724.66 | 236,802.82 |
| Jul-09 | 219,469.37 | 233,429.06 |
| Aug-09 | 250,783.39 | 229,164.76 |
| Sep-09 | 329,582.33 | 234,621.44 |
| Oct-09 | 260,424.32 | 235,046.10 |
| Nov-09 | 245,438.55 | 234,939.12 |
| Dec-09 | 273,743.19 | 236,915.23 |
| Jan-10 | 241,930.28 | 233,146.52 |
| Feb-10 | 238,907.56 | 233,983.97 |
| Mar-10 | 241,101.63 | 238,219.15 |
| Apr-10 | 236,134.38 | 243,125.66 |
| May-10 | 250,275.85 | 251,126.29 |
| Jun-10 | 247,438.93 | 252,935.82 |
| Jul-10 | 248,506.39 | 255,355.57 |
| Aug-10 | 270,044.74 | 256,960.68 |
| Sep-10 | 284,636.98 | 253,215.23 |
| Oct-10 | 253,939.12 | 252,674.80 |
| Nov-10 | 253,999.07 | 253,388.18 |
| Dec-10 | 227,362.93 | 249,523.16 |
| Jan-11 | 250,030.67 | 250,198.19 |
| Feb-11 | 232,373.84 | 249,653.71 |
| Mar-11 | 264,053.73 | 251,566.39 |
| Apr-11 | 239,069.50 | 251,810.98 |
| May-11 | 242,575.74 | 251,169.30 |
| Jun-11 | 259,884.19 | 252,206.41 |
| Jul-11 | 264,048.87 | 253,501.62 |
| Aug-11 | 279,297.14 | 254,272.65 |
| Sep-11 | 276,887.77 | 253,626.88 |
| Oct-11 | 264,252.08 | 254,486.29 |
| Nov-11 | 258,494.35 | 254,860.90 |
| Dec-11 | 233,522.37 | 255,374.19 |
| Jan-12 | 251,551.95 | 255,500.96 |
| Feb-12 | 236,096.56 | 255,811.19 |
| Mar-12 | 236,162.82 | 253,486.95 |
| Apr-12 | 268,067.04 | 255,903.41 |
| May-12 | 243,934.54 | 256,016.64 |
| Jun-12 | 258,700.74 | 255,918.02 |
| Jul-12 | 259,144.14 | 255,425.96 |
| Aug-12 | 242,450.91 | 252,355.44 |
| Sep-12 | 274,106.78 | 252,123.69 |
| Oct-12 | 263,174.92 | 252,033.93 |
| Nov-12 | 266,419.71 | 252,694.37 |
| Dec-12 | 236,262.49 | 252,922.72 |
| Jan-13 | 262,477.54 | 253,833.18 |
| Feb-13 | 197,623.16 | 250,627.07 |
| Mar-13 | 280,285.77 | 254,303.98 |
| Apr-13 | 229,694.58 | 251,022.94 |
| May-13 | 234,612.35 | 250,246.09 |
| Jun-13 | 236,583.71 | 248,403.01 |
| Jul-13 | 243,360.47 | 247,171.03 |
| Aug-13 | 232,297.10 | 246,324.88 |
| Sep-13 | 247,603.42 | 244,116.27 |
| Oct-13 | 252,928.32 | 243,262.39 |
| Nov-13 | 240,973.17 | 241,141.84 |
| Dec-13 | 249,479.74 | 242,243.28 |
| Jan-14 | 247,227.13 | 240,972.41 |
| Feb-14 | 225,554.96 | 243,300.06 |
| Mar-14 | 219,627.05 | 238,245.17 |
| Apr-14 | 240,163.18 | 239,200.88 |
| May-14 | 243,347.04 | 239,928.77 |
| Jun-14 | 252,453.01 | 241,251.22 |
| Jul-14 | 247,973.00 | 241,635.59 |
| Aug-14 | 259,296.67 | 243,885.56 |
| Sep-14 | 283,662.80 | 246,890.51 |
| Oct-14 | 270,021.47 | 248,314.94 |
| Nov-14 | 265,541.45 | 250,362.29 |
| Dec-14 | 263,004.13 | 251,489.32 |
| Jan-15 | 277,292.73 | 253,989.96 |
| Feb-15 | 256,752.07 | 256,593.72 |
| Mar-15 | 236,010.08 | 257,958.97 |
| Apr-15 | 258,473.82 | 259,484.86 |
| May-15 | 249,762.32 | 260,019.46 |
| Jun-15 | 263,213.12 | 260,916.14 |
| Jul-15 | 283,549.38 | 263,880.84 |
| Aug-15 | 285,115.79 | 266,032.43 |
| Sep-15 | 284,063.18 | 266,065.80 |
| Oct-15 | 281,161.13 | 266,994.10 |
| Nov-15 | 282,298.44 | 268,390.52 |
| Dec-15 | 261,458.36 | 268,261.70 |
| Jan-16 | 262,853.01 | 267,059.23 |
| Feb-16 | 227,903.95 | 264,655.22 |
| Mar-16 | 226,182.72 | 263,836.27 |
| Apr-16 | 256,051.76 | 263,634.43 |
| May-16 | 268,027.66 | 265,156.54 |
| Jun-16 | 257,475.26 | 264,678.39 |
| Jul-16 | 276,021.55 | 264,051.07 |
| Aug-16 | 282,206.65 | 263,808.64 |
| Sep-16 | 254,704.63 | 261,362.09 |
| Oct-16 | 283,644.11 | 261,569.01 |
| Nov-16 | 283,642.79 | 261,681.04 |
| Dec-16 | 264,843.62 | 261,963.14 |
| Jan-17 | 269,773.65 | 262,539.86 |
| Feb-17 | 239,576.47 | 263,512.57 |
| Mar-17 | 236,385.55 | 264,362.81 |
| Apr-17 | | 243,025.16 |
| May-17 | | 220,689.52 |
| Jun-17 | | 199,233.25 |
| Jul-17 | | 176,231.46 |
| Aug-17 | | 152,714.24 |