



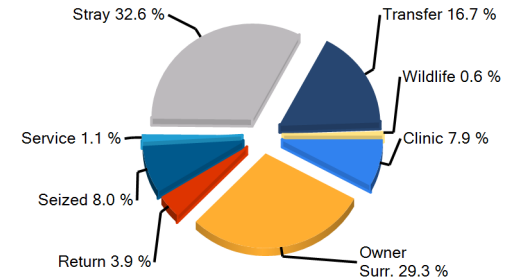
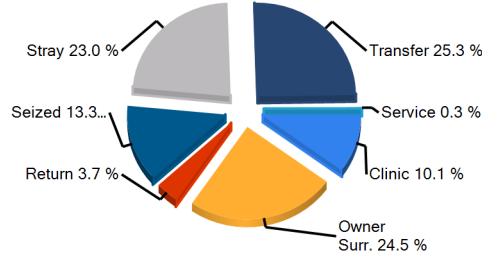
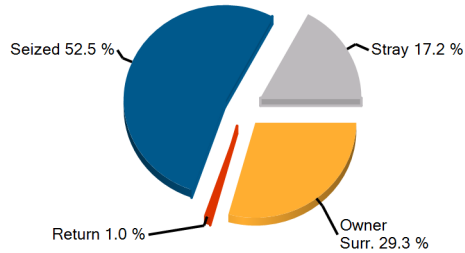
## Shelter Statistics - Intake

Start Date: January 01, 2012  
End Date: January 31, 2012

*does not include your shelter's data*

*does not include your shelter's data*

USGA68 Lumpkin County Animal Shelter	Your Shelter					Georgia (91 organizations)					United States (1792 organizations)				
	Dog		Cat		Other	Dog		Cat		Other	Dog		Cat		Other
	< year	year+	< year	year+		< year	year+	< year	year+		< year	year+	< year	year+	
<b>Intakes That were:</b>															
Previously Altered	1	6	0	5	0	388	604	114	282	0	5,657	21,129	4,393	15,870	649
<b>Totals by Intake</b>															
Clinic	0	0	0	0	0	130	242	141	116	0	2,455	4,481	2,590	2,883	52
Owner Surrender	15	8	6	0	0	545	530	185	251	16	10,841	14,987	6,481	11,925	1,871
Return	0	1	0	0	0	88	94	27	22	0	1,291	2,685	753	1,377	53
Seized	15	23	1	13	0	138	415	17	222	38	1,873	6,336	610	3,039	661
Service	0	0	0	0	0	1	1	2	11	0	118	637	276	647	40
Stray	3	7	3	4	0	415	516	139	362	3	10,086	19,831	6,540	14,165	669
Transfer	0	0	0	0	0	820	439	205	113	0	8,924	9,784	2,693	4,197	686
Wildlife	0	0	0	0	0	0	0	0	0	1	0	0	0	0	895
<b>Total</b>	<b>33</b>	<b>39</b>	<b>10</b>	<b>17</b>	<b>0</b>	<b>2,137</b>	<b>2,237</b>	<b>716</b>	<b>1,097</b>	<b>58</b>	<b>35,588</b>	<b>58,741</b>	<b>19,943</b>	<b>38,233</b>	<b>4,927</b>



Earliest entry: 1/1/2012  
Latest entry: 1/31/2012

Daily Use Date: 9/21/2009  
Run Date: 2/9/2012 6:19:07 PM





## Shelter Statistics - Outcome

Start Date: January 01, 2012

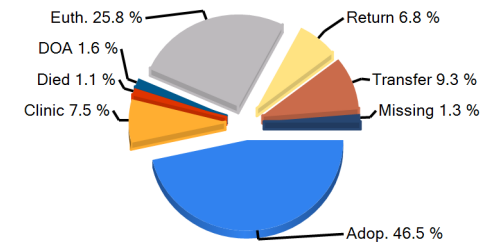
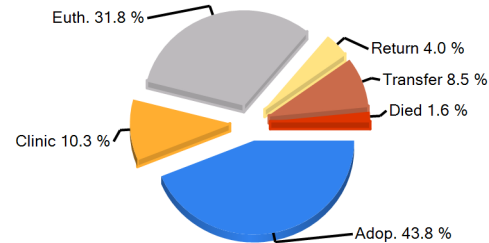
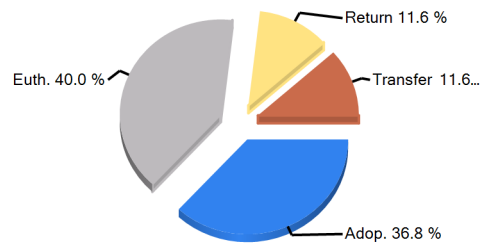
End Date: January 31, 2012

*does not include your shelter's data*

*does not include your shelter's data*

USGA68  
Lumpkin County Animal Shelter

	Your Shelter					Georgia (91 organizations)					United States (1792 organizations)				
	Dog		Cat		Other	Dog		Cat		Other	Dog		Cat		Other
	< year	year+	< year	year+		< year	year+	< year	year+		< year	year+	< year	year+	
<b>Person</b>															
A) Have Email Address	6	19	9	7	0	1,176	751	570	277	24	18,196	19,442	14,742	11,909	1,117
B) Have Phone Number	7	22	9	8	0	1,283	1,122	641	379	53	22,766	33,861	19,220	18,013	2,075
C) Have ZipCode	7	22	9	8	0	1,282	1,115	640	379	50	22,700	33,745	19,148	17,954	2,046
<b>Totals by Outcome</b>															
Adoption	6	14	8	7	0	1,133	705	482	244	51	19,411	21,716	16,301	13,943	1,864
Clinic	0	0	0	0	0	129	236	139	111	0	2,354	4,108	2,550	2,805	54
Died	0	0	0	0	0	25	9	10	14	0	455	470	315	431	128
DOA	0	0	0	0	0	0	6	0	6	5	55	1,112	29	815	449
Euthanasia	12	10	6	10	0	348	830	78	634	7	4,132	16,717	2,866	15,492	1,486
Missing	0	0	0	0	0	0	0	0	7	0	57	190	132	308	13
Return To Owner	1	8	1	1	0	21	184	18	15	2	1,002	8,060	330	1,154	101
Service	0	0	0	0	0	1	1	2	11	0	81	225	257	404	3
Transfer	2	9	0	0	0	217	219	34	35	1	4,222	5,916	1,296	2,724	543
Wildlife	0	0	0	0	0	0	0	0	0	0	0	0	0	0	415
<b>Total</b>	<b>21</b>	<b>41</b>	<b>15</b>	<b>18</b>	<b>0</b>	<b>1,874</b>	<b>2,190</b>	<b>763</b>	<b>1,077</b>	<b>66</b>	<b>31,769</b>	<b>58,514</b>	<b>24,076</b>	<b>38,076</b>	<b>5,056</b>



Earliest entry: 1/1/2012

Latest entry: 1/31/2012

Daily Use Date: 9/21/2009

Run Date: 2/9/2012 6:19:07 PM





## Shelter Statistics - Avg Length of Stay by Intake Type

Start Date: January 01, 2012

End Date: January 31, 2012

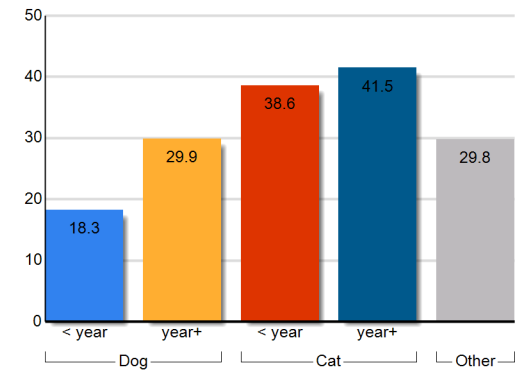
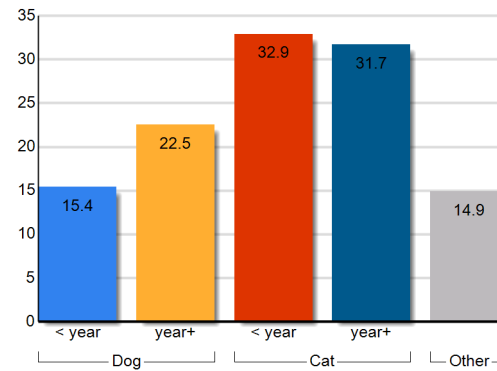
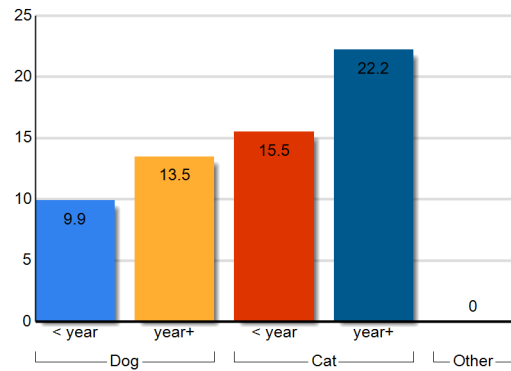
*does not include your shelter's data*

*does not include your shelter's data*

USGA68

Lumpkin County Animal Shelter

Intake Type	Your Shelter					Georgia (91 organizations)					United States (1792 organizations)				
	Dog		Cat		Other	Dog		Cat		Other	Dog		Cat		Other
	< year	year+	< year	year+		< year	year+	< year	year+		< year	year+	< year	year+	
Clinic	0	0	0	0	0	0.1	0.7	0.1	0.3	0	4.3	13.6	6.5	16.5	19.9
Owner Surrender	7	20.2	21.7	51.7	0	14.9	24.4	29.4	27.1	14.8	16.2	29.5	32.4	36.6	32.4
Return	0	8.1	0	0	0	15.8	31.6	26.9	101.6	0	12.3	35	19.6	55.7	37.1
Seized	8.5	10.5	10.7	6.9	0	16.6	18.5	59.3	14.5	5.9	20.6	20.1	44.6	28.3	64.1
Service	0	0	0	0	0	0.3	0.1	0.3	0.2	0	1.6	3.6	8	8.9	19.3
Stray	24.2	8.9	1.7	54.9	0	19	23.9	71.6	19.6	39.2	23.6	34.7	53.9	49.4	38.3
Transfer	0	0	0	0	0	16.7	35.5	22.1	153.1	0	20	34.8	39.5	54.9	14.4
Wildlife	0	0	0	0	0	0	0	0	0	0	0	0	0	0	3
<b>Total</b>	<b>9.9</b>	<b>13.5</b>	<b>15.5</b>	<b>22.2</b>	<b>0</b>	<b>15.4</b>	<b>22.5</b>	<b>32.9</b>	<b>31.7</b>	<b>14.9</b>	<b>18.3</b>	<b>29.9</b>	<b>38.6</b>	<b>41.5</b>	<b>29.8</b>



Earliest entry: 1/1/2012

Latest entry: 1/31/2012

Daily Use Date: 9/21/2009

Run Date: 2/9/2012 6:19:07 PM





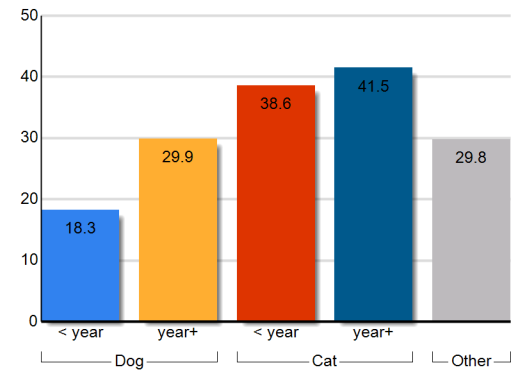
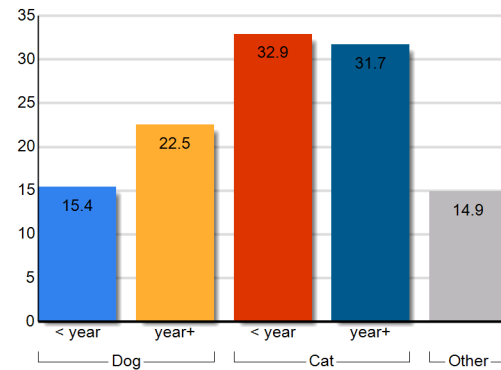
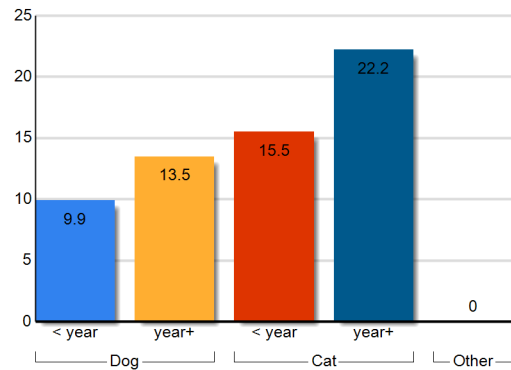
## Shelter Statistics - Avg Length of Stay by Outcome Type

Start Date: January 01, 2012  
End Date: January 31, 2012

*does not include your shelter's data*

*does not include your shelter's data*

USGA68 Lumpkin County Animal Shelter	Your Shelter					Georgia (91 organizations)					United States (1792 organizations)				
	Dog		Cat		Other	Dog		Cat		Other	Dog		Cat		Other
	< year	year+	< year	year+		< year	year+	< year	year+		< year	year+	< year	year+	
<b>Outcome Type</b>															
Adoption	11.8	19.2	10.9	39	0	18.4	39.4	35.7	63.7	18.5	21.1	44.6	45.5	72.9	44.8
Clinic	0	0	0	0	0	0.1	0.7	0.1	0.3	0	4.3	14.4	6.6	14.9	23.1
Died	0	0	0	0	0	41.8	27.4	404.9	665.8	0	21.9	49.4	75.3	151	74.5
Euthanasia	7.9	9	22.8	11.6	0	13.2	19.5	30.4	13.1	1.1	19	26.4	25.3	15.2	21.3
Missing	0	0	0	0	0	0	0	0	40	0	91.6	251.2	141	224.8	96.6
Return To Owner	4.3	1.6	8	11.2	0	3.7	2.6	51.7	3.7	0.6	5.3	7	28.2	46.4	23.7
Service	0	0	0	0	0	0.3	0.1	0.3	0.2	0	0.5	4.1	6.4	15.7	150.7
Transfer	19	20.1	0	0	0	10.8	20	14.8	17.2	34.1	14.7	26	35	34.3	24.9
Wildlife	0	0	0	0	0	0	0	0	0	0	0	0	0	0	16.5
<b>Total</b>	<b>9.9</b>	<b>13.5</b>	<b>15.5</b>	<b>22.2</b>	<b>0</b>	<b>15.4</b>	<b>22.5</b>	<b>32.9</b>	<b>31.7</b>	<b>14.9</b>	<b>18.3</b>	<b>29.9</b>	<b>38.6</b>	<b>41.5</b>	<b>29.8</b>



Earliest entry: 1/1/2012  
Latest entry: 1/31/2012

Daily Use Date: 9/21/2009  
Run Date: 2/9/2012 6:19:07 PM





## Shelter Statistics – Animal Care Days by Intake Type

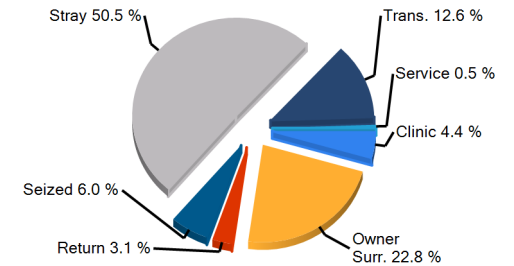
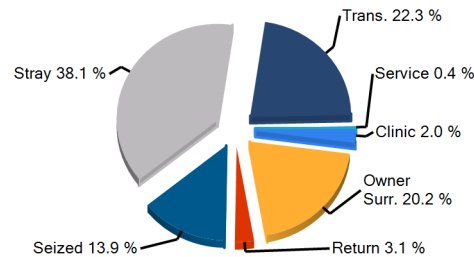
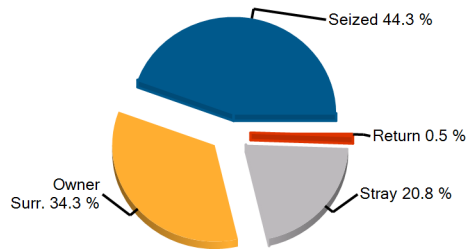
Start Date: January 01, 2012  
End Date: January 31, 2012

USGA68  
Lumpkin County Animal Shelter

*does not include your shelter's data*

*does not include your shelter's data*

Intake Type	Your Shelter					Georgia (91 organizations)					United States (1792 organizations)				
	Dog		Cat		Other	Dog		Cat		Other	Dog		Cat		Other
	< year	year+	< year	year+		< year	year+	< year	year+		< year	year+	< year	year+	
Clinic	0	0	0	0	0	1319	2398	815	1423	0	60482	171546	63165	107816	621
Owner Surrender	138	179	120	68	0	19054	17858	11017	10286	544	381620	559972	407608	626746	99264
Return	0	8	0	0	0	2873	4003	664	1390	0	37808	119787	30774	90240	2408
Seized	102	375	73	102	0	5573	19189	2997	9488	3353	65867	257703	53487	116130	50507
Service	0	0	0	0	0	124	620	1	158	0	935	6354	4255	4790	890
Stray	69	85	5	148	0	32182	39743	22379	16294	480	769736	1239168	1097225	1393783	94934
Transfer	0	0	0	0	0	27256	22287	8270	7114	0	306419	427268	212487	178260	20031
Wildlife	0	0	0	0	0	0	0	0	0	124	0	0	0	0	31946
<b>Total</b>	<b>309</b>	<b>647</b>	<b>197</b>	<b>318</b>	<b>0</b>	<b>88381</b>	<b>106099</b>	<b>46144</b>	<b>46152</b>	<b>4502</b>	<b>1622867</b>	<b>2781799</b>	<b>1869002</b>	<b>2517766</b>	<b>300602</b>



Earliest entry: 1/1/2012  
Latest entry: 1/31/2012

Daily Use Date: 9/21/2009  
Run Date: 2/9/2012 6:19:07 PM





## Shelter Statistics – Animal Care Days by Outcome Type

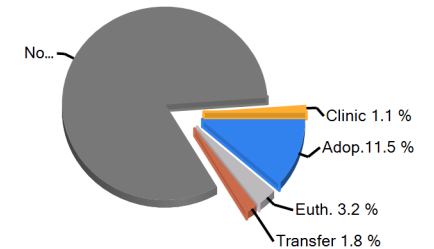
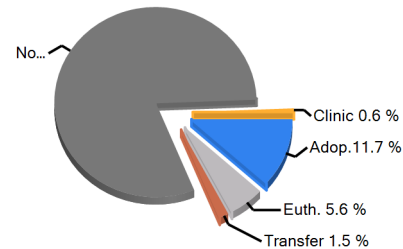
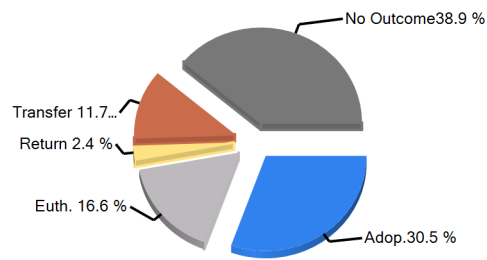
Start Date: January 01, 2012

End Date: January 31, 2012

*does not include your shelter's data*

*does not include your shelter's data*

USGA68 Lumpkin County Animal Shelter	Your Shelter					Georgia (91 organizations)					United States (1792 organizations)				
	Dog		Cat		Other	Dog		Cat		Other	Dog		Cat		Other
	< year	year+	< year	year+		< year	year+	< year	year+		< year	year+	< year	year+	
<b>Outcome Type</b>															
Adoption	78	235	57	79	0	14199	8805	6617	3980	415	266651	279778	260521	211513	27466
Clinic	0	0	0	0	0	17	162	9	38	0	4207	6808	7677	5419	311
Died	0	0	0	0	0	357	55	146	115	0	6896	4763	5384	4896	1191
Euthanasia	66	108	29	41	0	4704	7333	987	3326	7	52938	117197	27284	87501	4341
Missing	0	0	0	0	0	0	0	0	155	0	2376	2923	4065	5362	304
Return To Owner	4	13	8	10	0	123	427	169	37	1	4121	22423	3426	5925	710
Service	0	0	0	0	0	0	0	1	3	0	96	525	565	717	39
Transfer	57	115	0	0	0	1673	2049	246	243	56	48565	66433	18443	26637	6839
Wildlife	0	0	0	0	0	0	0	0	0	0	0	0	0	0	2602
No Outcome	104	176	103	188	0	67308	87268	37969	38255	4022	1237017	2280950	1541638	2169796	256799
<b>Total</b>	<b>309</b>	<b>647</b>	<b>197</b>	<b>318</b>	<b>0</b>	<b>88381</b>	<b>106099</b>	<b>46144</b>	<b>46152</b>	<b>4502</b>	<b>1622867</b>	<b>2781799</b>	<b>1869002</b>	<b>2517766</b>	<b>300602</b>



Earliest entry: 1/1/2012

Latest entry: 1/31/2012

Daily Use Date: 9/21/2009

Run Date: 2/9/2012 6:19:07 PM





## Shelter Statistics - Fees and Revenue

Start Date: January 01, 2012  
End Date: January 31, 2012

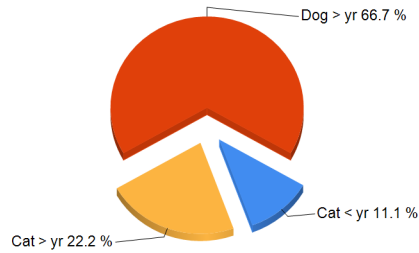
USGA68  
Lumpkin County Animal Shelter

*does not include your shelter's data*

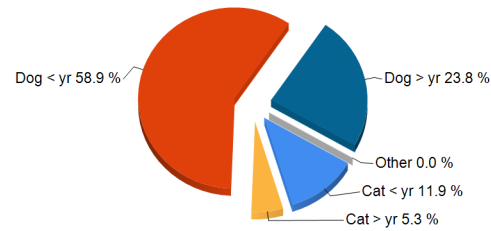
*does not include your shelter's data*

	Your Shelter					Georgia (91 organizations)					United States (1792 organizations)				
	Dog		Cat		Other	Dog		Cat		Other	Dog		Cat		Other
	< year	year+	< year	year+		< year	year+	< year	year+		< year	year+	< year	year+	
<b>Intake Revenue</b>															
<b>Fees</b>															
Avg Fees (\$)	0	25	0	0	0	39	43	46	45	0	30	39	26	34	18
Total Revenue (\$)	0	25	0	0	0	1,615	1,625	460	900	0	22,909	109,252	14,589	89,848	4,730
<b>Adoption Revenue</b>															
<b>Fees</b>															
Avg Fees (\$)	0	90	60	60	0	132	121	88	83	15	137	95	75	48	25
Total Revenue (\$)	0	360	60	120	0	74,632	30,127	15,138	6,760	30	1,159,343	1,083,424	485,635	375,046	24,601

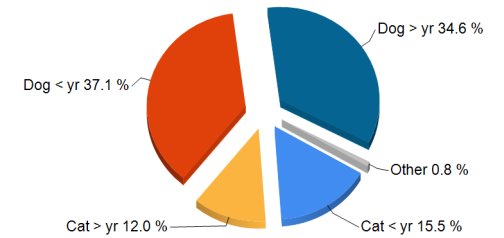
**Total Adoption Revenue**



**Total Adoption Revenue**



**Total Adoption Revenue**



Earliest entry: 1/1/2012  
Latest entry: 1/31/2012

Daily Use Date: 9/21/2009  
Run Date: 2/9/2012 6:19:07 PM





USGA68

## Pethealth's Contribution to Lumpkin County Animal Shelter

ShelterCare Gift of Insurance Claims Paid*:	\$0
ShelterCare Insurance Enrollment Costs*:	\$98
24PetWatch Registration Savings:	\$65
PetPoint Software Value:	\$200
Total Pethealth Investment 1/1/2012 - 1/31/2012	<hr/> \$363

*\*For ShelterCare Gifts issued via PetPoint*

Earliest entry: 1/1/2012  
Latest entry: 1/31/2012

Daily Use Date: 9/21/2009  
Run Date: 2/9/2012 6:19:07 PM

EMPOWERING ANIMAL WELFARE THROUGH DATA MANAGEMENT



# Daily Count Report

Print Date Thursday, February 09, 2012

Inventory Start Date 1/1/2012 12:00 AM  
Inventory End Date 1/31/2012 11:59 PM  
Species All  
Primary Breed All  
Age Group All  
Intake Type All  
Intake Subtype All  
Outcome Type All  
Outcome Subtype All  
Site All

	Cat	Dog	Total
1/1/2012	22	27	49
1/2/2012	22	27	49
1/3/2012	23	31	54
1/4/2012	22	33	55
1/5/2012	27	26	53
1/6/2012	26	28	54
1/7/2012	24	28	52
1/8/2012	22	25	47
1/9/2012	22	28	50
1/10/2012	19	27	46
1/11/2012	16	26	42
1/12/2012	15	31	46
1/13/2012	18	33	51
1/14/2012	16	35	51
1/15/2012	15	33	48
1/16/2012	15	35	50

	<b>Cat</b>	<b>Dog</b>	<b>Total</b>
<b>1/17/2012</b>	16	42	58
<b>1/18/2012</b>	14	35	49
<b>1/19/2012</b>	16	34	50
<b>1/20/2012</b>	17	37	54
<b>1/21/2012</b>	14	34	48
<b>1/22/2012</b>	13	33	46
<b>1/23/2012</b>	13	33	46
<b>1/24/2012</b>	13	36	49
<b>1/25/2012</b>	12	30	42
<b>1/26/2012</b>	13	31	44
<b>1/27/2012</b>	16	38	54
<b>1/28/2012</b>	18	44	62
<b>1/29/2012</b>	16	42	58
<b>1/30/2012</b>	16	43	59
<b>1/31/2012</b>	16	39	55
<b>Total</b>	547	1024	1571

<b>Species</b>	<b>Average</b>
<b>Cat</b>	<b>17.65</b>
<b>Dog</b>	<b>33.03</b>

# Animal Daily Management Report

Print Date Thursday, February 09, 2012

Report Date 1/31/2012 11:59 PM

Financial Year 1/1/2012 12:00 AM

	Wednesday 1/25/2012	Thursday 1/26/2012	Friday 1/27/2012	Saturday 1/28/2012	Sunday 1/29/2012	Monday 1/30/2012	Tuesday 1/31/2012	Week to Date	Month to Date	Year to Date	Last Year to Date	Difference
<b>Intake</b>	<b>1</b>	<b>2</b>	<b>10</b>	<b>9</b>	<b>0</b>	<b>1</b>	<b>3</b>	<b>4</b>	<b>99</b>	<b>99</b>	<b>122</b>	<b>-23</b>
<b>Owner/ Guardian Surrender</b>	<b>0</b>	<b>0</b>	<b>1</b>	<b>8</b>	<b>0</b>	<b>0</b>	<b>0</b>	<b>0</b>	<b>29</b>	<b>29</b>	<b>63</b>	<b>-34</b>
Dog	0	0	1	7	0	0	0	0	23	23	37	-14
Cat	0	0	0	1	0	0	0	0	6	6	26	-20
<b>Return</b>	<b>0</b>	<b>0</b>	<b>0</b>	<b>0</b>	<b>0</b>	<b>0</b>	<b>0</b>	<b>0</b>	<b>1</b>	<b>1</b>	<b>1</b>	<b>0</b>
Dog	0	0	0	0	0	0	0	0	1	1	1	0
Cat	0	0	0	0	0	0	0	0	0	0	0	0
<b>Stray</b>	<b>0</b>	<b>0</b>	<b>0</b>	<b>1</b>	<b>0</b>	<b>0</b>	<b>1</b>	<b>1</b>	<b>17</b>	<b>17</b>	<b>23</b>	<b>-6</b>
Dog	0	0	0	0	0	0	1	1	10	10	16	-6
Cat	0	0	0	1	0	0	0	0	7	7	7	0
<b>Seized</b>	<b>1</b>	<b>2</b>	<b>9</b>	<b>0</b>	<b>0</b>	<b>1</b>	<b>2</b>	<b>3</b>	<b>52</b>	<b>52</b>	<b>35</b>	<b>17</b>
Dog	1	1	6	0	0	1	1	2	38	38	20	18
Cat	0	1	3	0	0	0	1	1	14	14	15	-1
<b>Service In</b>	<b>0</b>	<b>0</b>	<b>0</b>	<b>0</b>	<b>0</b>	<b>0</b>	<b>0</b>	<b>0</b>	<b>0</b>	<b>0</b>	<b>0</b>	<b>0</b>
Cat	0	0	0	0	0	0	0	0	0	0	0	0
<b>Adoption</b>	<b>0</b>	<b>0</b>	<b>1</b>	<b>4</b>	<b>0</b>	<b>1</b>	<b>1</b>	<b>2</b>	<b>35</b>	<b>35</b>	<b>33</b>	<b>2</b>
<b>Adoption</b>	<b>0</b>	<b>0</b>	<b>1</b>	<b>4</b>	<b>0</b>	<b>1</b>	<b>1</b>	<b>2</b>	<b>35</b>	<b>35</b>	<b>33</b>	<b>2</b>
Dog	0	0	1	2	0	1	1	2	20	20	23	-3
Cat	0	0	0	2	0	0	0	0	15	15	10	5
<b>Other Outcomes</b>	<b>0</b>	<b>0</b>	<b>0</b>	<b>0</b>	<b>0</b>	<b>6</b>	<b>1</b>	<b>7</b>	<b>60</b>	<b>60</b>	<b>93</b>	<b>-33</b>
Transfer Out	0	0	0	0	0	0	1	1	11	11	26	-15

	Wednesday 1/25/2012	Thursday 1/26/2012	Friday 1/27/2012	Saturday 1/28/2012	Sunday 1/29/2012	Monday 1/30/2012	Tuesday 1/31/2012	Week to Date	Month to Date	Year to Date	Last Year to Date	Difference
Dog	0	0	0	0	0	0	1	1	11	11	26	-15
Cat	0	0	0	0	0	0	0	0	0	0	0	0
<b>Return to Owner/ Guardian</b>	<b>0</b>	<b>0</b>	<b>0</b>	<b>0</b>	<b>0</b>	<b>0</b>	<b>0</b>	<b>0</b>	<b>11</b>	<b>11</b>	<b>8</b>	<b>3</b>
Dog	0	0	0	0	0	0	0	0	9	9	8	1
Cat	0	0	0	0	0	0	0	0	2	2	0	2
<b>Died</b>	<b>0</b>	<b>0</b>	<b>0</b>	<b>0</b>	<b>0</b>	<b>0</b>	<b>0</b>	<b>0</b>	<b>0</b>	<b>0</b>	<b>0</b>	<b>0</b>
Dog	0	0	0	0	0	0	0	0	0	0	0	0
Cat	0	0	0	0	0	0	0	0	0	0	0	0
<b>Euthanasia</b>	<b>0</b>	<b>0</b>	<b>0</b>	<b>0</b>	<b>0</b>	<b>6</b>	<b>0</b>	<b>6</b>	<b>38</b>	<b>38</b>	<b>59</b>	<b>-21</b>
Dog	0	0	0	0	0	5	0	5	22	22	18	4
Cat	0	0	0	0	0	1	0	1	16	16	41	-25
<b>DOA</b>	<b>0</b>	<b>0</b>	<b>0</b>	<b>0</b>	<b>0</b>	<b>0</b>	<b>0</b>	<b>0</b>	<b>0</b>	<b>0</b>	<b>0</b>	<b>0</b>
Cat	0	0	0	0	0	0	0	0	0	0	0	0
<b>Service Out</b>	<b>0</b>	<b>0</b>	<b>0</b>	<b>0</b>	<b>0</b>	<b>0</b>	<b>0</b>	<b>0</b>	<b>0</b>	<b>0</b>	<b>0</b>	<b>0</b>
Cat	0	0	0	0	0	0	0	0	0	0	0	0
	Wednesday 1/25/2012	Thursday 1/26/2012	Friday 1/27/2012	Saturday 1/28/2012	Sunday 1/29/2012	Monday 1/30/2012	Tuesday 1/31/2012	Week to Date	Month to Date	Year to Date	Last Year to Date	Difference
<b>Inventory By Location</b>												
Lumpkin County Animal Shelter	0	0	0	0	0	0	0	0	0	0	0	0
ISO	0	1	1	9	0	1	0	1	33	33	78	-45
Puppy Room	0	0	0	0	0	0	0	0	13	13	16	-3
Cat Room	0	0	0	0	1	0	0	0	15	15	15	0
Main Kennel	0	0	0	0	3	2	0	2	21	21	32	-11
Shelter #1	0	1	0	0	0	2	0	2	11	11	6	5

Shelter #2	0	0	0	0	0	0	0	0	0	0	0	0	0
Shelter #3	0	0	0	0	0	0	0	0	0	0	0	1	-1
Puppy Run	0	0	0	0	0	0	0	0	0	0	0	0	0
Shelter #2	0	2	0	1	0	1	1	2	8	8	32	-24	
Foster Home	0	0	0	0	0	0	0	0	0	0	3	-3	
Missing	0	0	0	0	0	0	0	0	0	0	0	0	
Intake	0	1	0	1	0	0	0	0	14	14	96	-82	
Seized	1	2	9	0	1	1	2	3	52	52	0	52	
<b>Total</b>	<b>1</b>	<b>7</b>	<b>10</b>	<b>11</b>	<b>5</b>	<b>7</b>	<b>3</b>	<b>10</b>	<b>167</b>	<b>167</b>	<b>279</b>	<b>-112</b>	