



Lumpkin County Sheriff's Office Courts & Special Services Division Conclusion for the Year of 2009

As of January 1, 2009, the Court Services Division had one Lieutenant, one Sergeant, one Corporal, two deputies, one Administrative Clerk and one open position. In March 2009, Deputy Hasley Gipson was hired to fill the open position.

On June 24, 2009, Deputy Cheryl Dale was reassigned from Animal Control to the Court Services Division temporarily. As of January 1, 2010 she was permanently attached to our division.

On August 1, 2009, Deputy Lloyd Brewer was attached to the Court Services Division from Uniform Patrol Division on a temporary basis. As of January 1, 2010 Deputy Brewer's position was made permanent.

Effective January 1, 2010, Cpl. Shane Murphy and Deputy Hasley Gipson was reassigned to the Uniform Patrol Division to boost the manpower for call for service.

In training, the Court Services Division accumulated a total of 312.75 hours for the 2009 year.

The Court Services Division had no personal issues in 2009.

The Court Services Division has eight vehicles in the inventory fleet list and the average mileage on each vehicle is in the vicinity of 100,000 miles. See attached fleet file.

Transports for the 2009 year increased due to Lumpkin County Detention Center housing inmates for Forsyth and White Counties. Throughout the year the Detention Center averaged about 40 inmates per month from the two counties. See attached charts.

In 2009, civil process increased slightly. During this time the main officer responsible for civil process was out due to a medical illness. Other officers stepped in and assumed the duty.

Due to the increase of transports from other counties and housed inmates as well as an increase in civil process and warrant services, the Court Services Division accumulated 99,513.4 miles on the vehicle fleet for 2009.

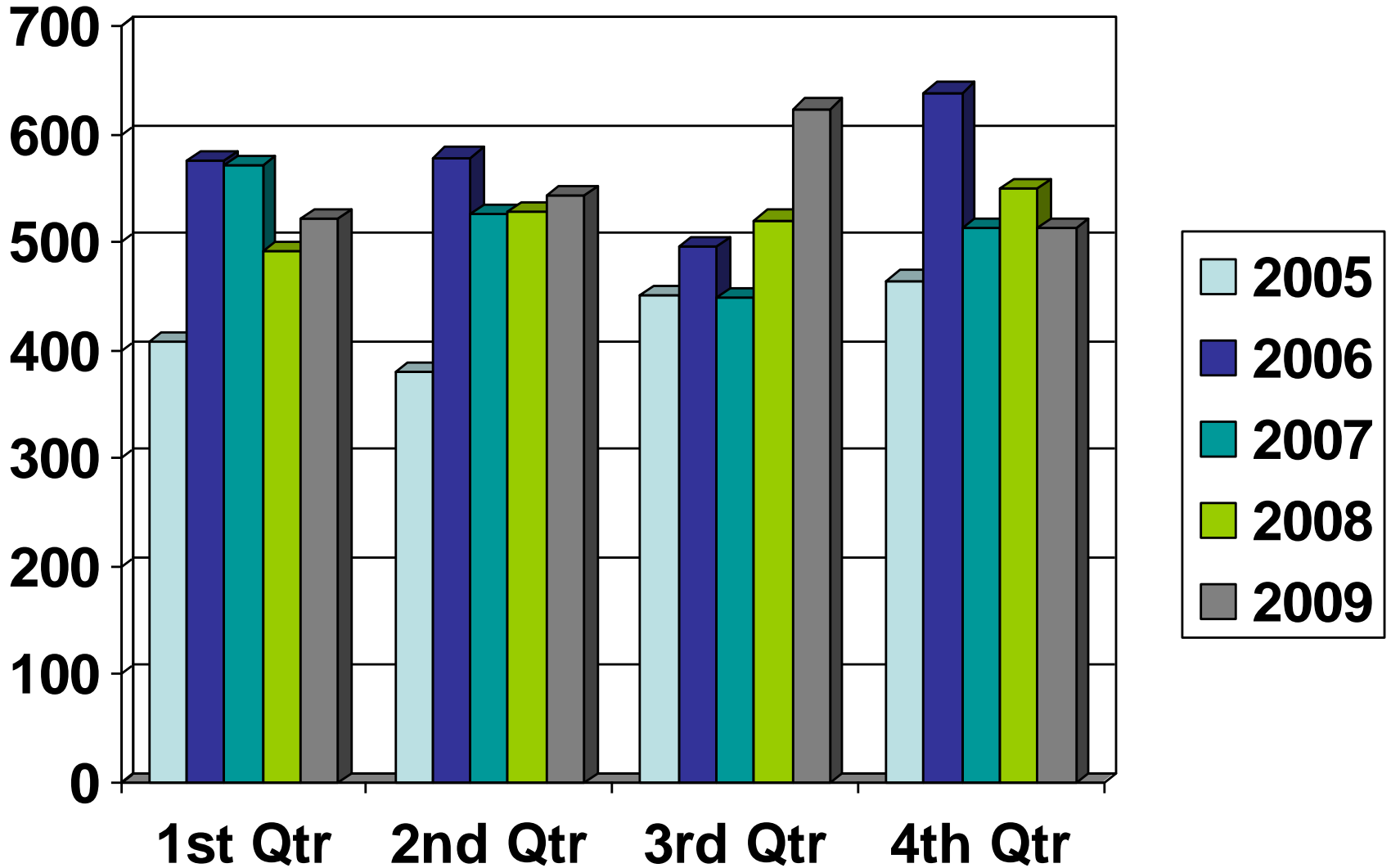


LUMPKIN COUNTY SHERIFFS OFFICE ACTIVITY REPORT 2009 TOTALS COURT SERVICES DIVISION

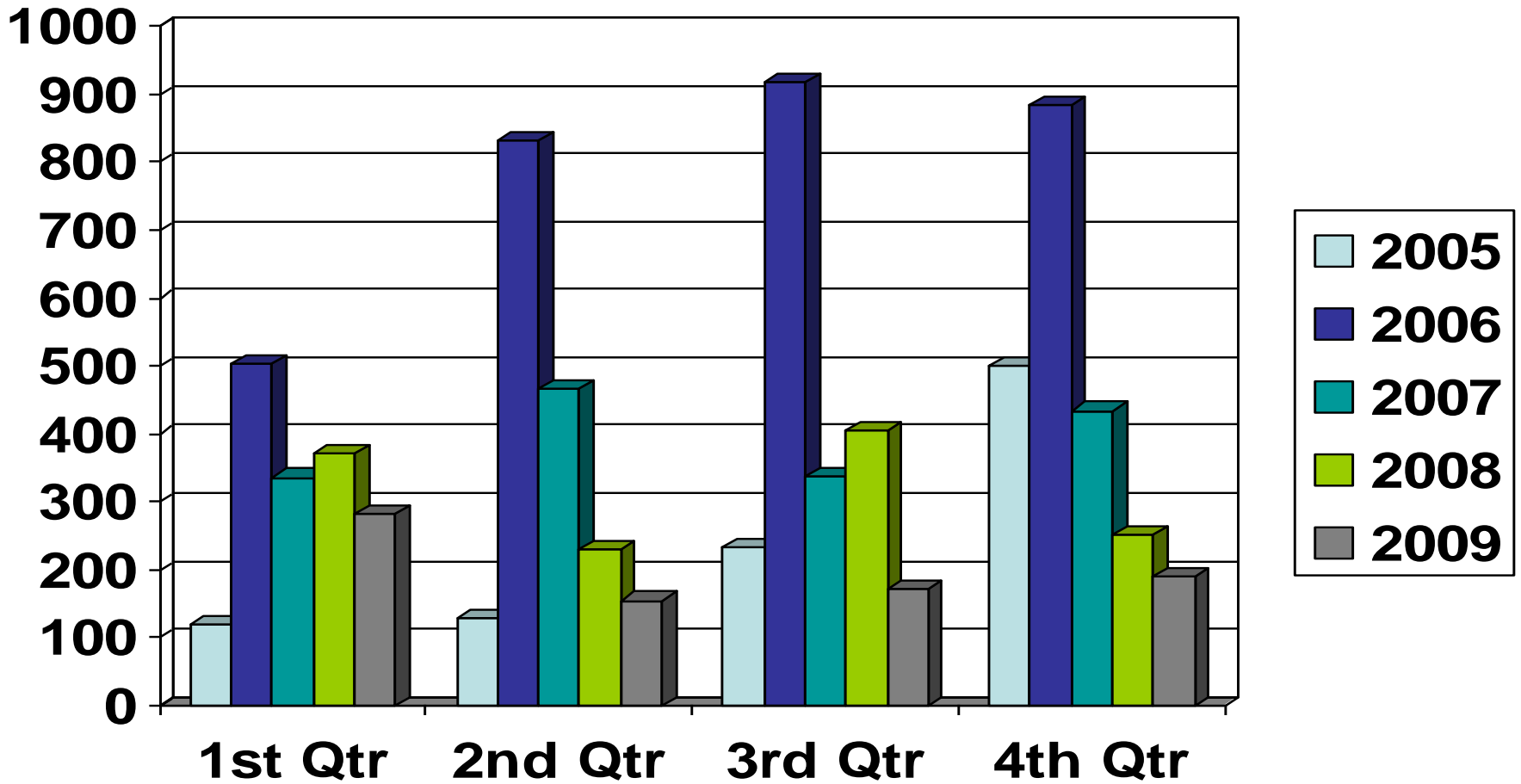
CIVIL PAPERS AND SUBPOENAS	
CIVIL PAPERS	1903
SUBPOENAS	587
ATTEMPTS OF SERVICE	2169
FI FA, WRIT, KEEP THE PEACE	40
HOURS ON FI FA, WRIT, KEEP THE PEACE	65
WARRANTS	
WARRANTS	343
ATTEMPTS OF SERVICE	843
COURT HOURS	
SUPERIOR	831.75
JUVENILE	538.25
MAGISTRATE	64.25
PROBATE	33.25
OTHER	
TRAINING	312.75
ASSIST MOTORIST	79
TOTAL MILEAGE	99,513.40
CIVIL / WARRANT CLERK ACTIVITY	
CIVIL PAPERS RECEIVED	2147
TOTAL CIVIL PAPERS SERVED	2208
SUBPOENAS RECEIVED	1040
SUBPOENAS SERVED OR RETURNED	799
WARRANTS RECEIVED	664
TOTAL WARRANTS SERVED	1006

TRANSPORTS	
PRISONER TRANSPORT IN COUNTY	
TIME	216.75
MILEAGE	1,203.55
PERSONS	694
PRISONER TRANSPORT OUT OF COUNTY	
TIME	916.75
MILEAGE	27,436.75
PERSONS	678
MENTAL PATIENT TRANSPORT	
TIME	184.25
MILEAGE	5,355.90
PERSONS	78

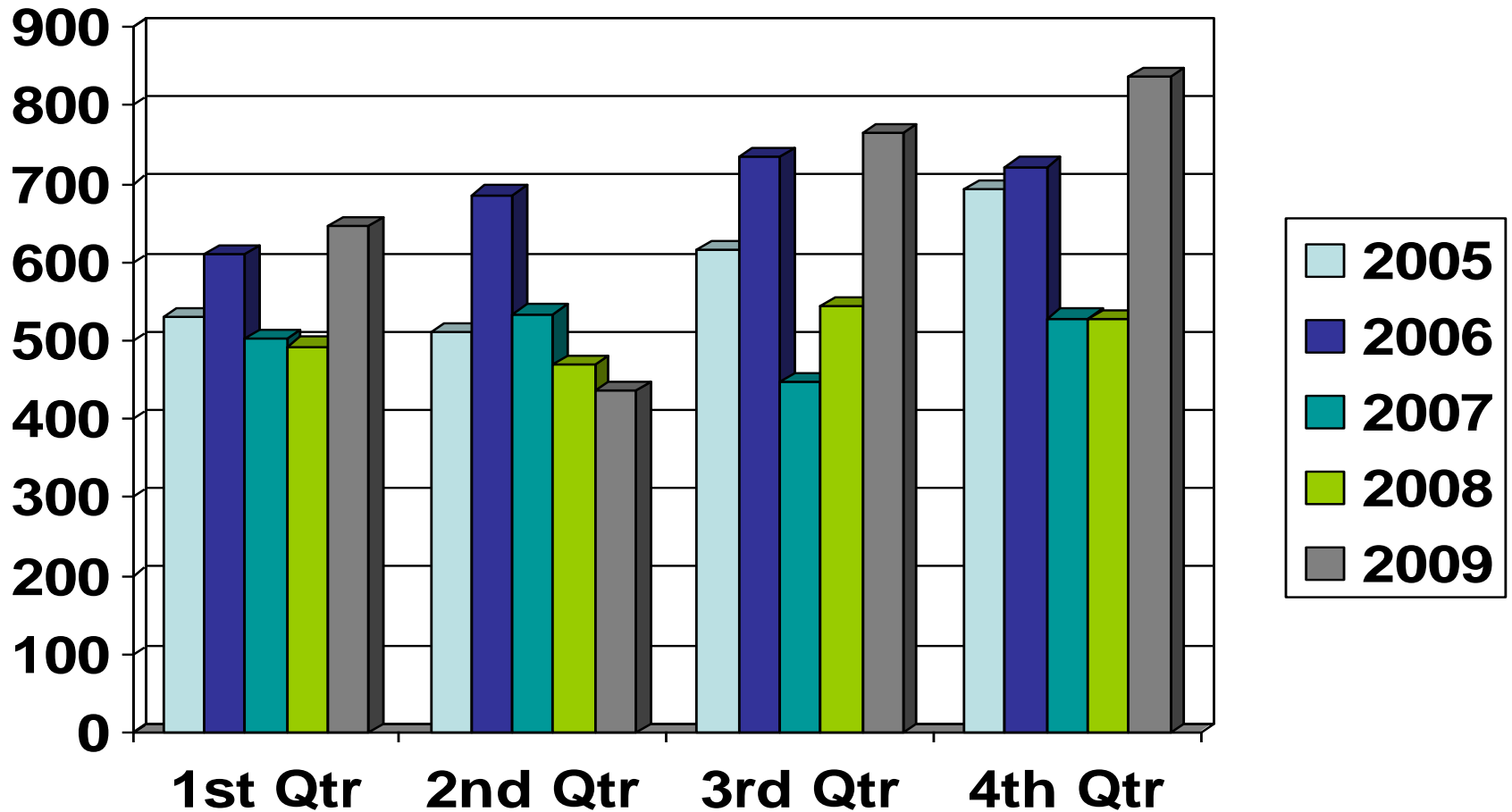
CIVIL PAPERS SERVED



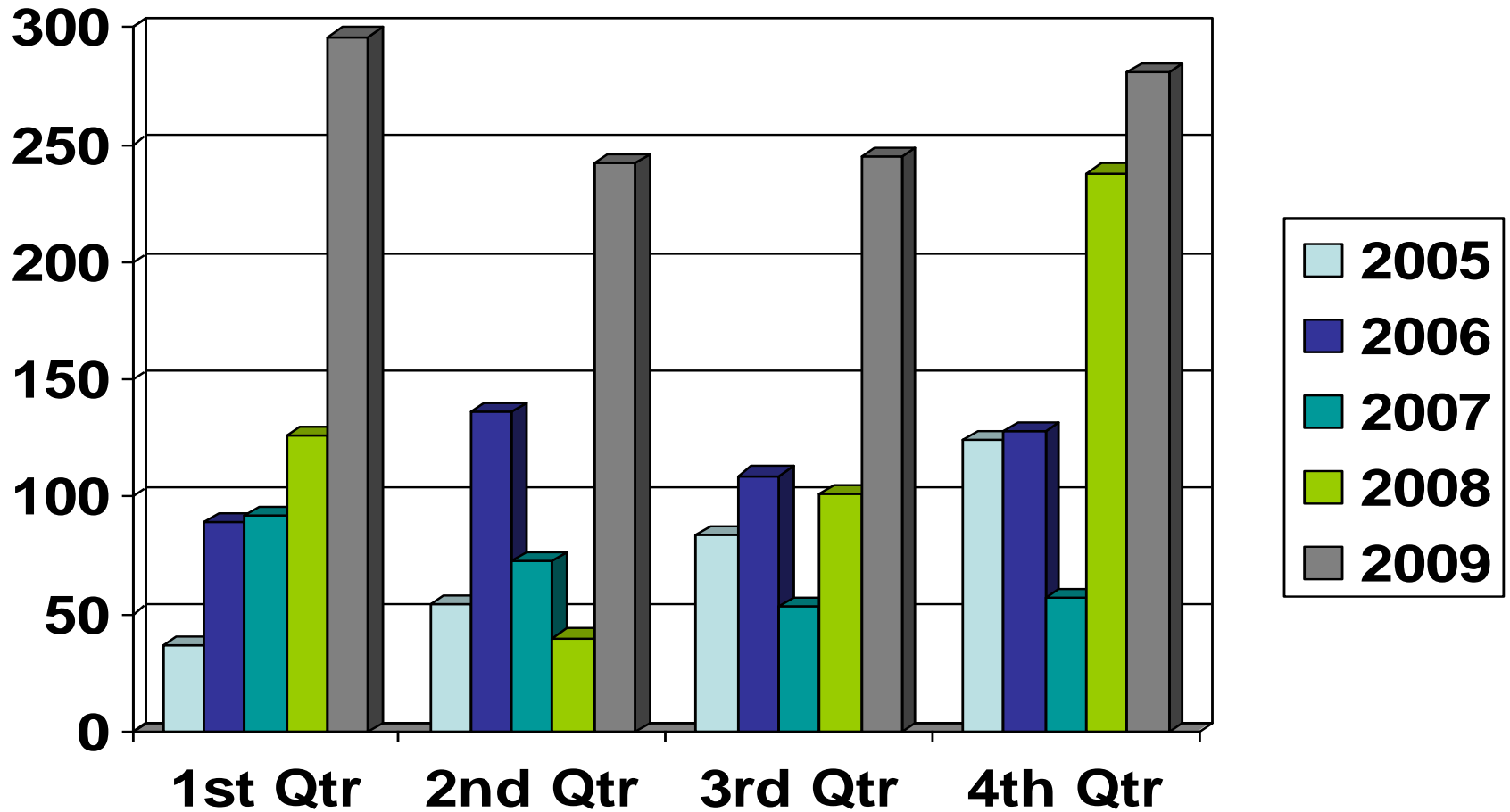
SUBPOENAS SERVED



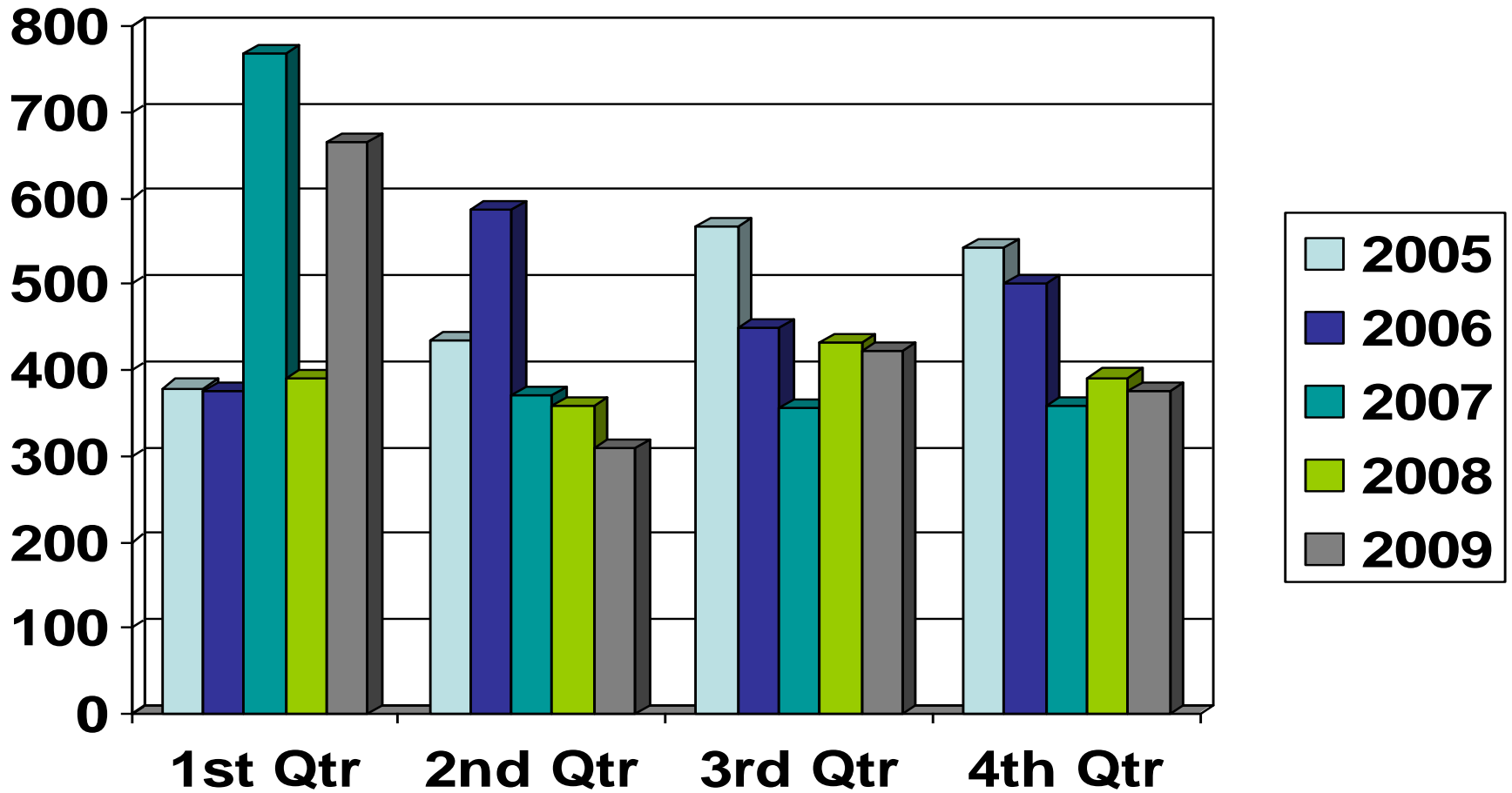
ATTEMPTS OF SERVICE



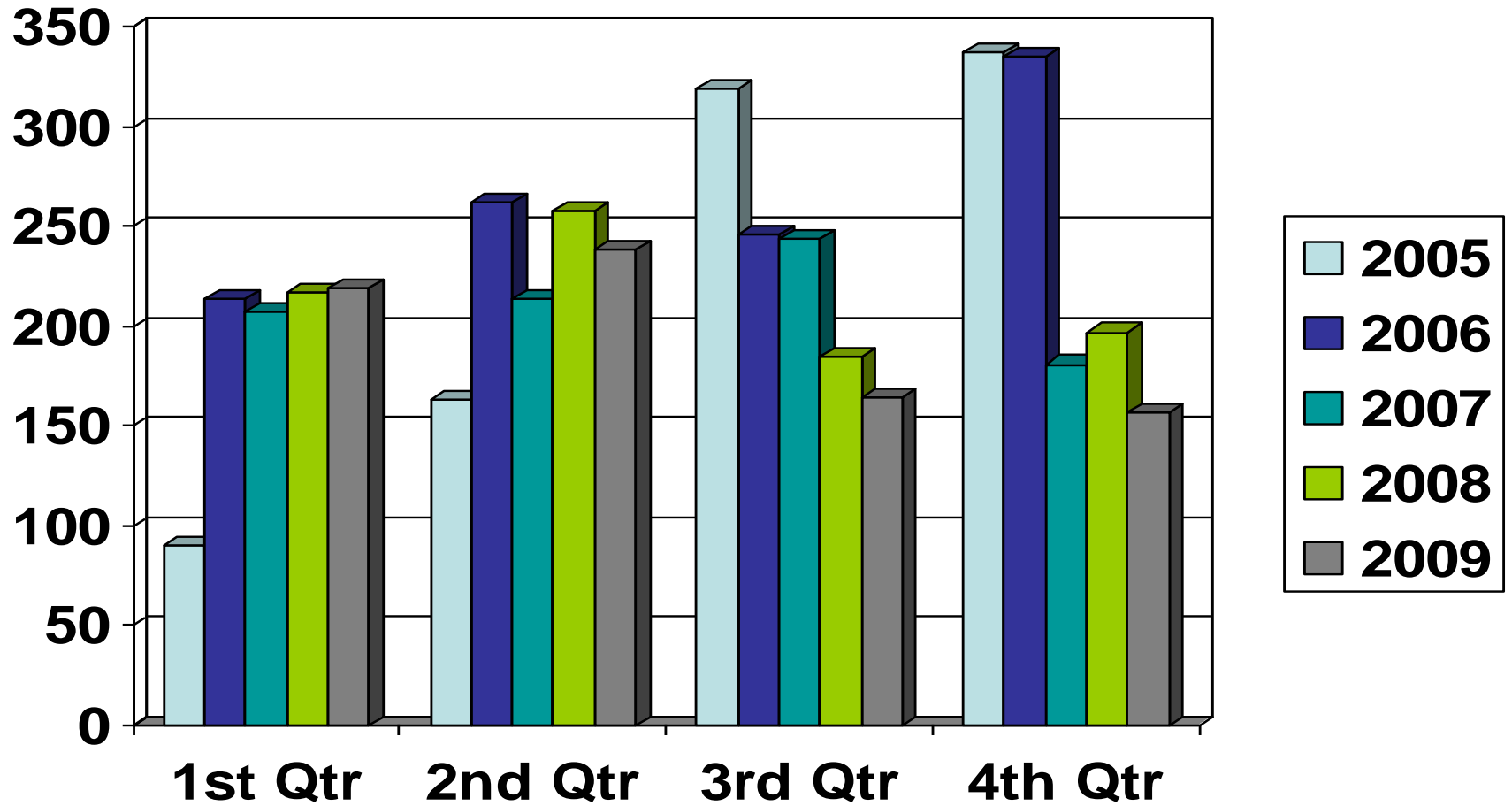
WARRANTS SERVED



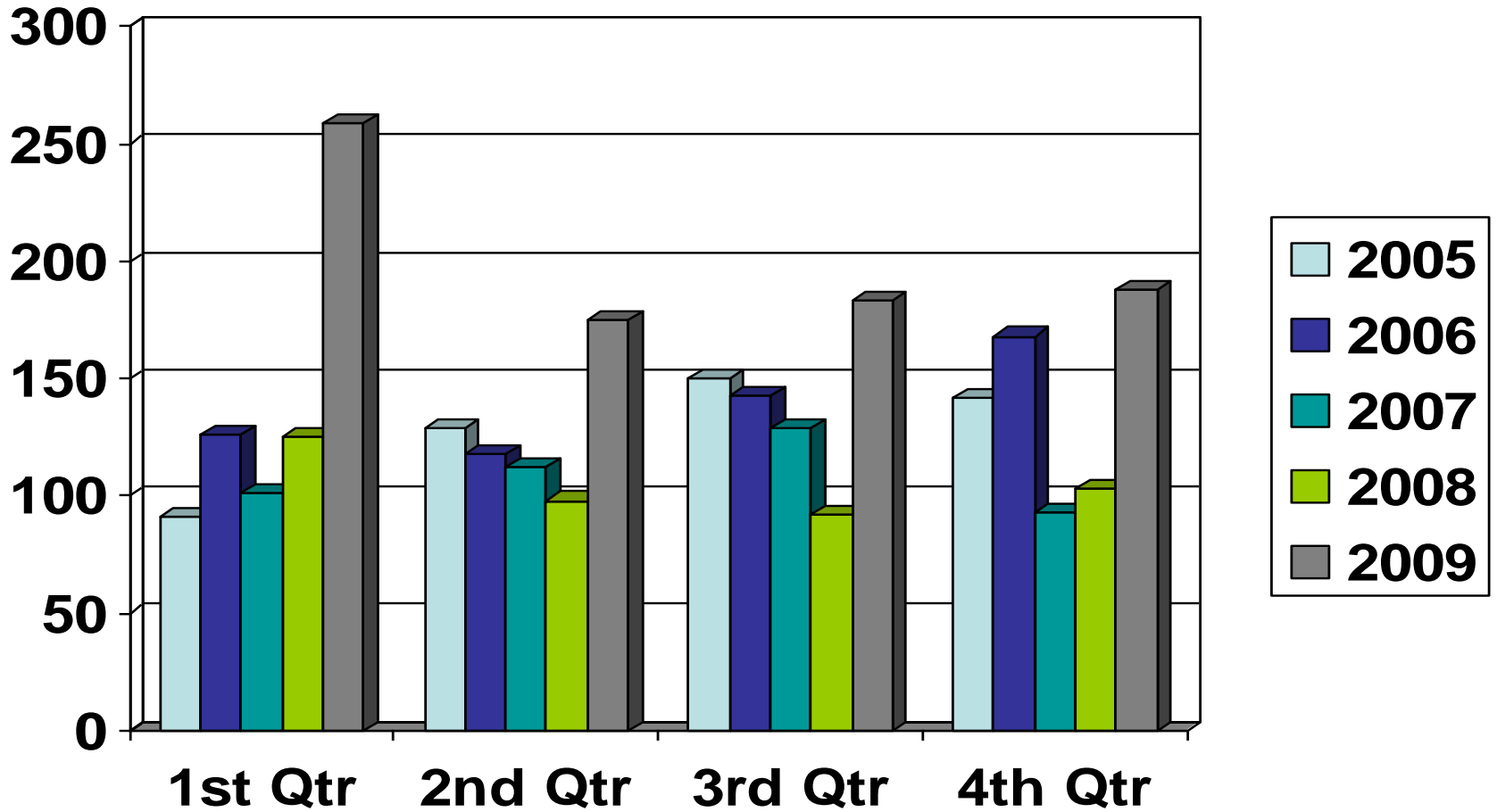
COURT HOURS



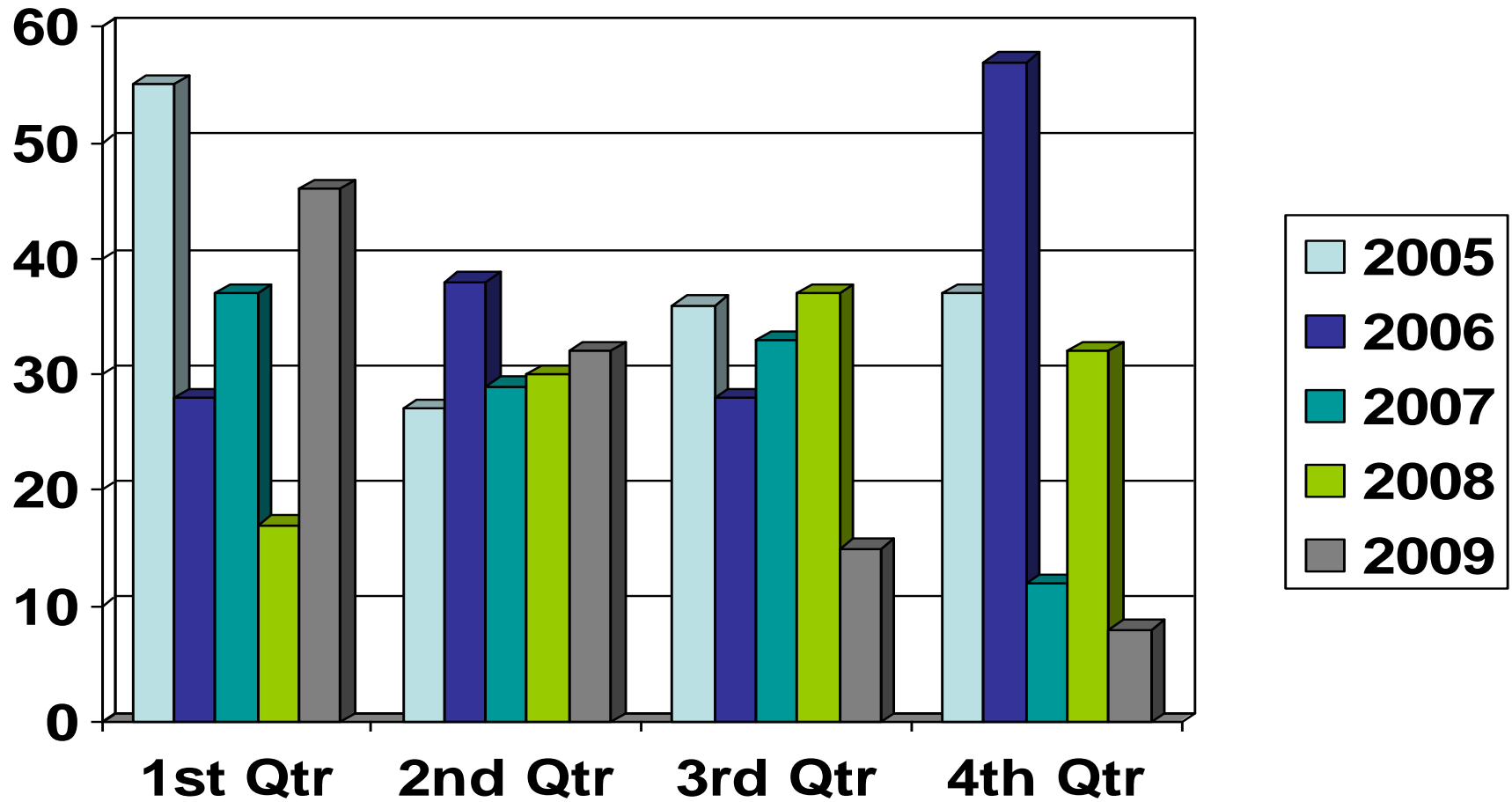
TRANSPORTS IN COUNTY



TRANSPORTS OUT COUNTY



MENTAL PATIENTS TRANSPORTS



**LUMPKIN COUNTY COURTS SERVICES DIVISION
INVENTORY
2010**

INVENTORY					
YEAR	MAKE	VIN #	VEHICLE #	YEAR IN MILEAGE	VEHICLE Assignment
2003	FORD CROWN VIC	2FAFP71453X139148	W-1	218,051	724
2003	FORD CROWN VIC	2FAFP71W13X178562	W-2	151,666	746
2005	FORD CROWN VIC	2FAFP71W65X169553	W-3	83,427	754
2001	CHEVROLET TAHOE	1GNEK13T71J2128807	W-4	110,006	720
2005	FORD CROWN VIC	2FAFP71W45X169552	W-5	78,319	711
2005	FORD VAN	1FTSS341645HB46600	W-6	12,733	All
2004	FORD EXPEDITION	1FMPU16WX4LA27310	W-8	87,010	706
1996	FORD CROWN VIC	2FALP71W7TX119700	W-9	136,514	