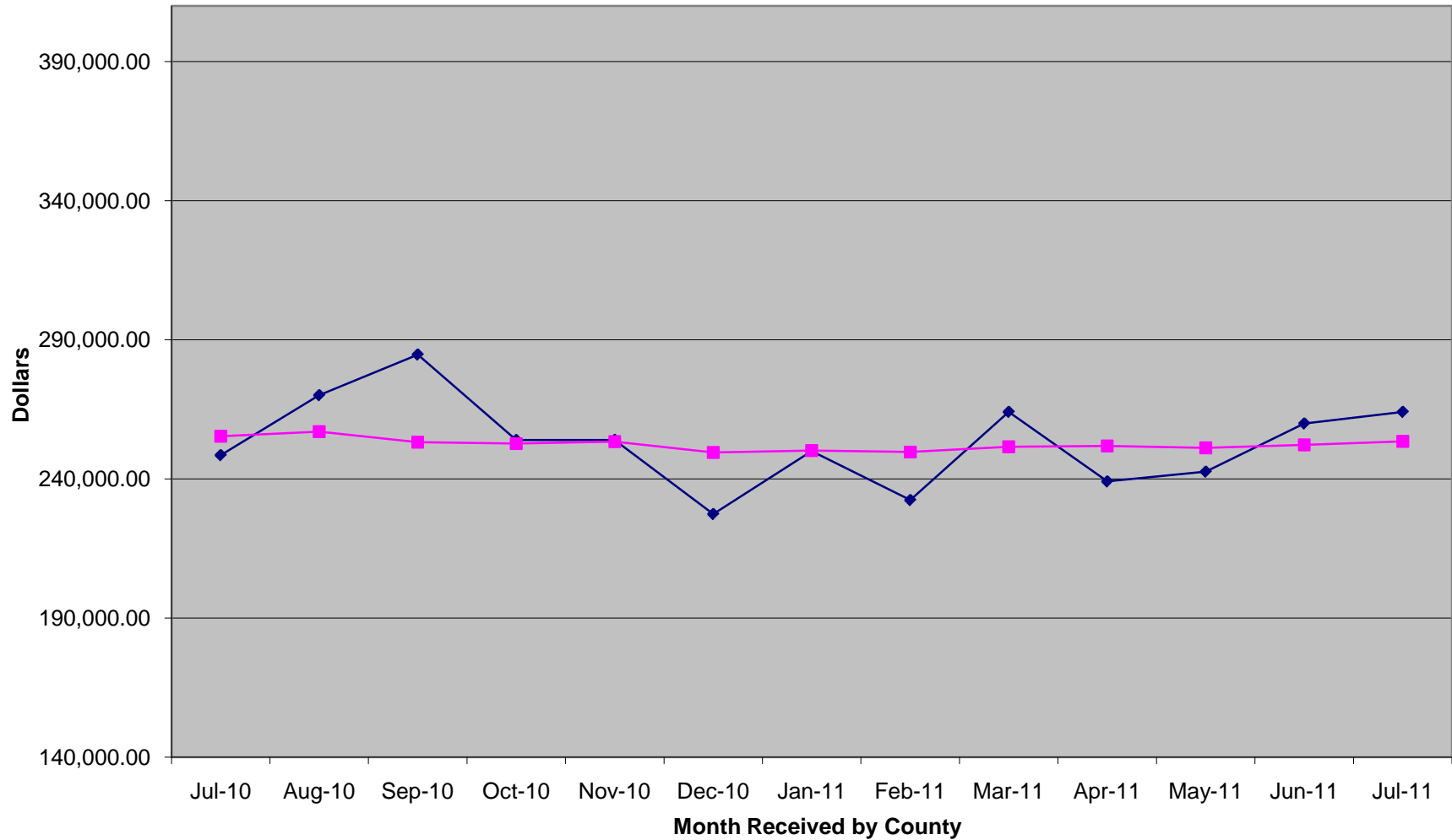


SPECIAL PURPOSE LOCAL OPTION SALES TAX COLLECTIONS



MONTH RECEIVED	AMOUNT (INCLUDING PRO-RATA DISTRIBUTIONS)
Jun-08	281,380.49
Jul-08	297,824.89
Aug-08	259,954.48
Sep-08	301,955.00
Oct-08	264,102.21
Nov-08	255,328.40
Dec-08	246,722.32
Jan-09	250,029.90
Feb-09	287,154.81
Mar-09	228,858.12
Apr-09	190,279.49
May-09	177,256.27
May-09	154,268.22
Jun-09	225,724.66
Jul-09	219,469.37
Aug-09	250,783.39
Sep-09	329,582.33
Oct-09	260,424.32
Nov-09	245,438.55
Dec-09	273,743.19
Jan-10	241,930.28
Feb-10	238,907.56
Mar-10	241,101.63
Apr-10	236,134.38
May-10	250,275.85
Jun-10	247,438.93
Jul-10	248,506.39
Aug-10	270,044.74
Sep-10	284,636.98
Oct-10	253,939.12
Nov-10	253,999.07
Dec-10	227,362.93
Jan-11	250,030.67
Feb-11	232,373.84
Mar-11	264,053.73
Apr-11	239,069.50
May-11	242,575.74
Jun-11	259,884.19
Jul-11	264,048.87

SPECIAL PURPOSE LOCAL OPTION SALES TAX COLLECTIONS

