

# Animal Daily Management Report

Print Date Wednesday, September 07, 2011

Report Date 8/31/2011 11:59 PM

Financial Year 1/1/2011 12:00 AM

	Thursday 8/25/2011	Friday 8/26/2011	Saturday 8/27/2011	Sunday 8/28/2011	Monday 8/29/2011	Tuesday 8/30/2011	Wednesday 8/31/2011	Week to Date	Month to Date	Year to Date	Last Year to Date	Difference
<b>Intake</b>	<b>3</b>	<b>10</b>	<b>0</b>	<b>0</b>	<b>10</b>	<b>12</b>	<b>13</b>	<b>35</b>	<b>211</b>	<b>1507</b>	<b>1562</b>	<b>-55</b>
<b>Owner/ Guardian Surrender</b>	<b>3</b>	<b>2</b>	<b>0</b>	<b>0</b>	<b>0</b>	<b>11</b>	<b>7</b>	<b>18</b>	<b>102</b>	<b>722</b>	<b>747</b>	<b>-25</b>
Dog	2	1	0	0	0	2	1	3	22	316	378	-62
Cat	1	1	0	0	0	9	6	15	80	406	369	37
<b>Transfer In</b>	<b>0</b>	<b>0</b>	<b>0</b>	<b>0</b>	<b>0</b>	<b>0</b>	<b>0</b>	<b>0</b>	<b>0</b>	<b>0</b>	<b>2</b>	<b>-2</b>
Dog	0	0	0	0	0	0	0	0	0	0	2	-2
<b>Return</b>	<b>0</b>	<b>0</b>	<b>0</b>	<b>0</b>	<b>0</b>	<b>0</b>	<b>0</b>	<b>0</b>	<b>0</b>	<b>24</b>	<b>43</b>	<b>-19</b>
Dog	0	0	0	0	0	0	0	0	0	22	36	-14
Cat	0	0	0	0	0	0	0	0	0	2	7	-5
<b>Stray</b>	<b>0</b>	<b>4</b>	<b>0</b>	<b>0</b>	<b>0</b>	<b>0</b>	<b>0</b>	<b>0</b>	<b>30</b>	<b>212</b>	<b>272</b>	<b>-60</b>
Dog	0	0	0	0	0	0	0	0	13	85	141	-56
Cat	0	4	0	0	0	0	0	0	17	127	131	-4
<b>Clinic</b>	<b>0</b>	<b>0</b>	<b>0</b>	<b>0</b>	<b>0</b>	<b>0</b>	<b>0</b>	<b>0</b>	<b>0</b>	<b>0</b>	<b>15</b>	<b>-15</b>
Dog	0	0	0	0	0	0	0	0	0	0	6	-6
Cat	0	0	0	0	0	0	0	0	0	0	9	-9
<b>Seized</b>	<b>0</b>	<b>4</b>	<b>0</b>	<b>0</b>	<b>10</b>	<b>1</b>	<b>6</b>	<b>17</b>	<b>79</b>	<b>548</b>	<b>483</b>	<b>65</b>
Dog	0	3	0	0	2	1	4	7	44	253	221	32
Cat	0	1	0	0	8	0	2	10	35	295	262	33
<b>Service In</b>	<b>0</b>	<b>0</b>	<b>0</b>	<b>0</b>	<b>0</b>	<b>0</b>	<b>0</b>	<b>0</b>	<b>0</b>	<b>1</b>	<b>0</b>	<b>1</b>
Cat	0	0	0	0	0	0	0	0	0	1	0	1
<b>Adoption</b>	<b>0</b>	<b>4</b>	<b>2</b>	<b>0</b>	<b>0</b>	<b>2</b>	<b>0</b>	<b>2</b>	<b>38</b>	<b>313</b>	<b>417</b>	<b>-104</b>

	Thursday	Friday	Saturday	Sunday	Monday	Tuesday	Wednesday	Week	Month	Year	Last Year	Difference
	8/25/2011	8/26/2011	8/27/2011	8/28/2011	8/29/2011	8/30/2011	8/31/2011	to Date	to Date	to Date	to Date	
<b>Adoption</b>	<b>0</b>	<b>4</b>	<b>2</b>	<b>0</b>	<b>0</b>	<b>2</b>	<b>0</b>	<b>2</b>	<b>38</b>	<b>313</b>	<b>417</b>	<b>-104</b>
Dog	0	2	0	0	0	2	0	2	21	185	287	-102
Cat	0	2	2	0	0	0	0	0	17	128	130	-2
<b>Other Outcomes</b>	<b>0</b>	<b>3</b>	<b>0</b>	<b>0</b>	<b>36</b>	<b>0</b>	<b>0</b>	<b>36</b>	<b>179</b>	<b>1172</b>	<b>1147</b>	<b>25</b>
<b>Transfer Out</b>	<b>0</b>	<b>2</b>	<b>0</b>	<b>0</b>	<b>0</b>	<b>0</b>	<b>0</b>	<b>0</b>	<b>21</b>	<b>205</b>	<b>153</b>	<b>52</b>
Dog	0	2	0	0	0	0	0	0	21	194	130	64
Cat	0	0	0	0	0	0	0	0	0	11	23	-12
<b>Return to Owner/ Guardian</b>	<b>0</b>	<b>1</b>	<b>0</b>	<b>0</b>	<b>0</b>	<b>0</b>	<b>0</b>	<b>0</b>	<b>14</b>	<b>62</b>	<b>59</b>	<b>3</b>
Dog	0	1	0	0	0	0	0	0	14	60	55	5
Cat	0	0	0	0	0	0	0	0	0	2	4	-2
<b>Died</b>	<b>0</b>	<b>0</b>	<b>0</b>	<b>0</b>	<b>0</b>	<b>0</b>	<b>0</b>	<b>0</b>	<b>0</b>	<b>4</b>	<b>12</b>	<b>-8</b>
Dog	0	0	0	0	0	0	0	0	0	1	6	-5
Cat	0	0	0	0	0	0	0	0	0	3	6	-3
<b>Euthanasia</b>	<b>0</b>	<b>0</b>	<b>0</b>	<b>0</b>	<b>36</b>	<b>0</b>	<b>0</b>	<b>36</b>	<b>144</b>	<b>900</b>	<b>912</b>	<b>-12</b>
Dog	0	0	0	0	12	0	0	12	30	227	322	-95
Cat	0	0	0	0	24	0	0	24	114	673	590	83
<b>DOA</b>	<b>0</b>	<b>0</b>	<b>0</b>	<b>0</b>	<b>0</b>	<b>0</b>	<b>0</b>	<b>0</b>	<b>0</b>	<b>0</b>	<b>4</b>	<b>-4</b>
Dog	0	0	0	0	0	0	0	0	0	0	2	-2
Cat	0	0	0	0	0	0	0	0	0	0	2	-2
<b>Clinic Out</b>	<b>0</b>	<b>0</b>	<b>0</b>	<b>0</b>	<b>0</b>	<b>0</b>	<b>0</b>	<b>0</b>	<b>0</b>	<b>0</b>	<b>7</b>	<b>-7</b>
Dog	0	0	0	0	0	0	0	0	0	0	6	-6
Cat	0	0	0	0	0	0	0	0	0	0	1	-1
<b>Service Out</b>	<b>0</b>	<b>0</b>	<b>0</b>	<b>0</b>	<b>0</b>	<b>0</b>	<b>0</b>	<b>0</b>	<b>0</b>	<b>1</b>	<b>0</b>	<b>1</b>
Cat	0	0	0	0	0	0	0	0	0	1	0	1

Error: Subreport could not be shown.



# Shelter Statistics - Intake

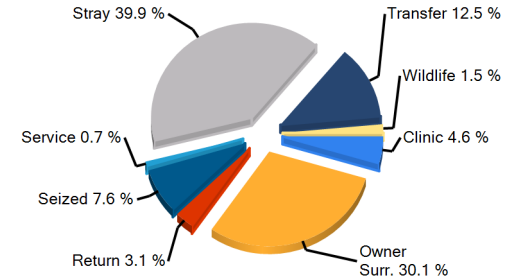
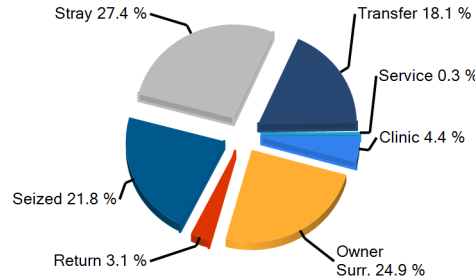
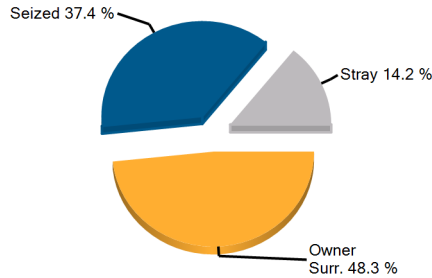
Start Date: August 01, 2011

End Date: August 31, 2011

*does not include your shelter's data*

*does not include your shelter's data*

USGA68 Lumpkin County Animal Shelter & PAWS Humane Society	Your Shelter					Georgia (88 organizations)					United States (1706 organizations)				
	Dog		Cat		Other	Dog		Cat		Other	Dog		Cat		Other
	< year	year+	< year	year+		< year	year+	< year	year+		< year	year+	< year	year+	
<b>Intakes That were:</b>															
Previously Altered	5	7	7	4	0	266	555	217	241	3	4,885	20,886	5,276	15,854	643
<b>Totals by Intake</b>															
Clinic	0	0	0	0	0	52	146	49	69	0	1,455	3,236	2,139	2,584	32
Owner Surrender	10	12	62	18	0	370	536	421	455	18	10,034	16,806	15,586	17,419	2,237
Return	0	0	0	0	0	89	83	23	29	0	1,306	2,631	882	1,430	76
Seized	13	31	18	17	0	161	675	110	567	61	1,659	7,226	1,615	4,202	1,037
Service	0	0	0	0	0	6	4	5	1	0	72	560	255	567	60
Stray	4	9	14	3	0	321	629	418	608	7	10,227	23,162	22,187	25,291	1,459
Transfer	0	0	0	0	0	660	305	240	102	1	7,238	9,375	4,653	3,888	687
Wildlife	0	0	0	0	0	0	0	0	0	4	0	0	0	0	2,998
<b>Total</b>	<b>27</b>	<b>52</b>	<b>94</b>	<b>38</b>	<b>0</b>	<b>1,659</b>	<b>2,378</b>	<b>1,266</b>	<b>1,831</b>	<b>91</b>	<b>31,991</b>	<b>62,996</b>	<b>47,317</b>	<b>55,381</b>	<b>8,586</b>



Earliest entry: 8/1/2011

Latest entry: 8/31/2011

Daily Use Date: 9/21/2009

Run Date: 9/7/2011 3:27:43 PM





## Shelter Statistics - Outcome

Start Date: August 01, 2011

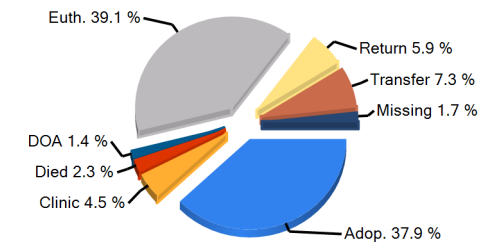
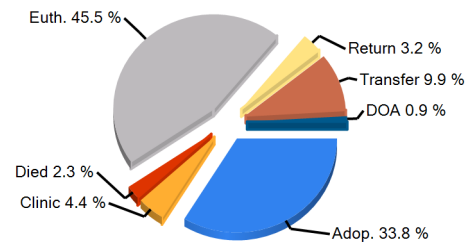
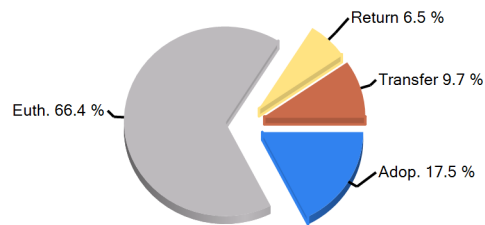
End Date: August 31, 2011

*does not include your shelter's data*

*does not include your shelter's data*

USGA68  
Lumpkin County Animal Shelter &  
PAWS Humane Society

	Your Shelter					Georgia (88 organizations)					United States (1706 organizations)				
	Dog		Cat		Other	Dog		Cat		Other	Dog		Cat		Other
	< year	year+	< year	year+		< year	year+	< year	year+		< year	year+	< year	year+	
<b>Person</b>															
A) Have Email Address	12	8	12	5	0	887	630	572	275	8	16,004	18,074	21,709	11,010	1,211
B) Have Phone Number	12	23	12	5	0	976	941	642	360	33	19,934	32,359	27,211	16,898	2,734
C) Have ZipCode	12	23	12	5	0	970	940	641	359	24	19,859	32,294	27,130	16,812	2,693
<b>Totals by Outcome</b>															
Adoption	12	9	12	5	0	896	612	587	274	32	17,506	20,323	24,520	12,772	2,154
Clinic	0	0	0	0	0	52	143	48	69	0	1,317	2,937	2,180	2,685	14
Died	0	0	0	0	0	78	29	32	24	2	787	724	1,763	987	336
DOA	0	0	0	0	0	5	12	3	4	16	76	1,182	112	891	624
Euthanasia	14	16	79	35	0	351	1,159	443	1,254	26	5,828	22,154	16,401	32,296	3,003
Missing	0	0	0	0	0	0	6	0	1	0	50	547	72	526	38
Return To Owner	0	14	0	0	0	25	186	3	16	1	1,108	9,062	443	1,265	132
Service	0	0	0	0	0	6	4	5	1	0	43	195	214	371	4
Transfer	15	6	0	0	0	300	244	90	64	6	3,735	5,691	2,079	2,523	840
Wildlife	0	0	0	0	0	0	0	0	0	3	0	0	0	0	1,509
<b>Total</b>	<b>41</b>	<b>45</b>	<b>91</b>	<b>40</b>	<b>0</b>	<b>1,713</b>	<b>2,395</b>	<b>1,211</b>	<b>1,707</b>	<b>86</b>	<b>30,450</b>	<b>62,815</b>	<b>47,784</b>	<b>54,316</b>	<b>8,654</b>



Earliest entry: 8/1/2011

Latest entry: 8/31/2011

Daily Use Date: 9/21/2009

Run Date: 9/7/2011 3:27:43 PM





## Shelter Statistics - Avg Length of Stay by Intake Type

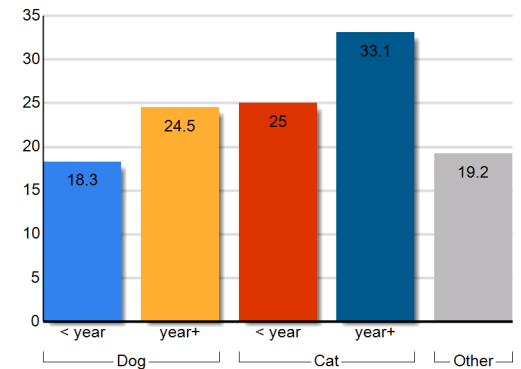
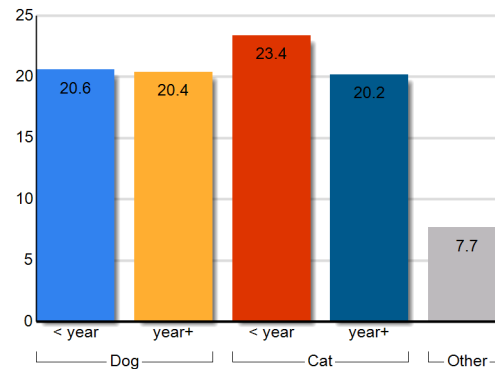
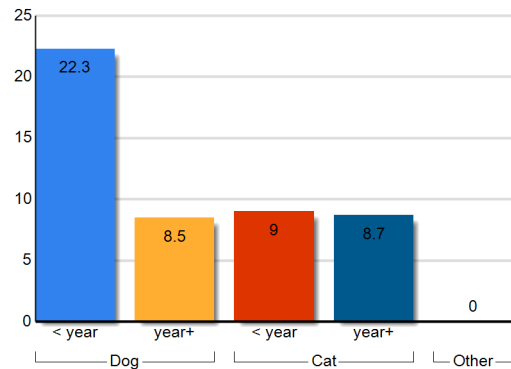
Start Date: August 01, 2011

End Date: August 31, 2011

*does not include your shelter's data*

*does not include your shelter's data*

USGA68 Lumpkin County Animal Shelter & PAWS Humane Society	Your Shelter					Georgia (88 organizations)					United States (1706 organizations)				
	Dog		Cat		Other	Dog		Cat		Other	Dog		Cat		Other
	< year	year+	< year	year+		< year	year+	< year	year+		< year	year+	< year	year+	
<b>Intake Type</b>															
Clinic	0	0	0	0	0	0.1	0.1	0.3	0.2	0	2.9	16.2	2.1	41.6	1
Owner Surrender	19.4	8.3	7.8	8.6	0	22.3	18.5	22.4	22.6	14.4	15.9	21.7	22.3	27.6	33
Return	59	0	0	0	0	15.6	30.3	15.8	30.9	42.1	13.7	32.1	15.1	55.2	31.6
Seized	23.6	7.3	6.4	8.6	0	18.5	14.2	9.5	13	3.4	22.7	18.2	23.6	21.9	20.4
Service	0	0	0	0	0	0.2	0.1	0.1	0	0	4.1	5.9	6.5	5	1.7
Stray	16.6	10.9	16.9	10.8	0	24.7	20.2	24.4	19	9.7	20.2	27.5	27.3	35.7	23.8
Transfer	0	0	0	0	0	20.2	45.1	38.1	63.3	10.2	22.2	29.1	36	42.5	17.4
Wildlife	0	0	0	0	0	0	0	0	0	0.3	0	0	0	0	6.8
<b>Total</b>	<b>22.3</b>	<b>8.5</b>	<b>9</b>	<b>8.7</b>	<b>0</b>	<b>20.6</b>	<b>20.4</b>	<b>23.4</b>	<b>20.2</b>	<b>7.7</b>	<b>18.3</b>	<b>24.5</b>	<b>25</b>	<b>33.1</b>	<b>19.2</b>



Earliest entry: 8/1/2011

Latest entry: 8/31/2011

Daily Use Date: 9/21/2009

Run Date: 9/7/2011 3:27:43 PM





## Shelter Statistics - Avg Length of Stay by Outcome Type

Start Date: August 01, 2011

End Date: August 31, 2011

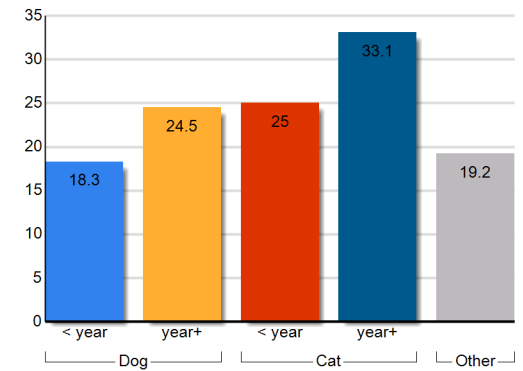
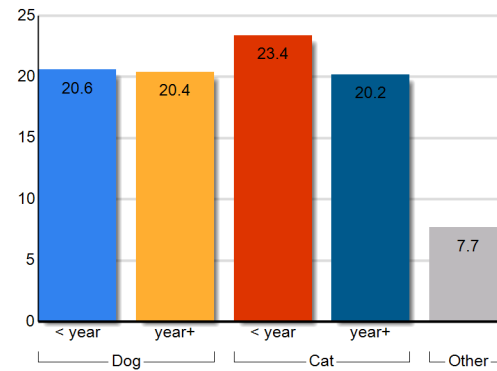
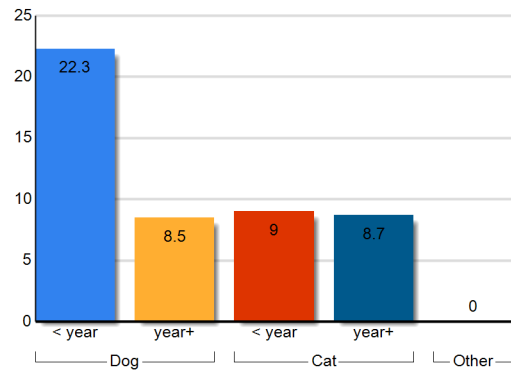
*does not include your shelter's data*

*does not include your shelter's data*

USGA68

Lumpkin County Animal Shelter &  
PAWS Humane Society

Outcome Type	Your Shelter					Georgia (88 organizations)					United States (1706 organizations)				
	Dog		Cat		Other	Dog		Cat		Other	Dog		Cat		Other
	< year	year+	< year	year+		< year	year+	< year	year+		< year	year+	< year	year+	
Adoption	14.6	12.8	24.8	12.2	0	27	46.2	32.7	76	15.2	23.2	42.5	38	78	46
Clinic	0	0	0	0	0	0.1	0.1	0.2	0.2	0	2.9	17.7	2.3	46.3	5
Died	0	0	0	0	0	21	31.6	22.4	32.8	2.3	20.6	46.3	21.3	56.4	13
Euthanasia	21.7	8.4	6.6	8.2	0	18	12.5	13.7	6.6	3.5	10.5	10.8	10.1	10.7	4.2
Missing	0	0	0	0	0	0	13	0	30.3	0	100.5	308	81.4	226.4	66.7
Return To Owner	0	1.6	0	0	0	4.7	3.5	2.5	33.9	1	7	5.8	12.7	35.5	21
Service	0	0	0	0	0	0.2	0.1	0.1	0	0	0.2	68.5	12.4	91.6	128.5
Transfer	29	18.4	0	0	0	10.2	18.3	26.4	63.9	12.2	15.6	20.3	20.3	30.2	25.1
Wildlife	0	0	0	0	0	0	0	0	0	0	0	0	0	0	15.1
<b>Total</b>	<b>22.3</b>	<b>8.5</b>	<b>9</b>	<b>8.7</b>	<b>0</b>	<b>20.6</b>	<b>20.4</b>	<b>23.4</b>	<b>20.2</b>	<b>7.7</b>	<b>18.3</b>	<b>24.5</b>	<b>25</b>	<b>33.1</b>	<b>19.2</b>



Earliest entry: 8/1/2011

Latest entry: 8/31/2011

Daily Use Date: 9/21/2009

Run Date: 9/7/2011 3:27:43 PM





## Shelter Statistics – Animal Care Days by Intake Type

Start Date: August 01, 2011

End Date: August 31, 2011

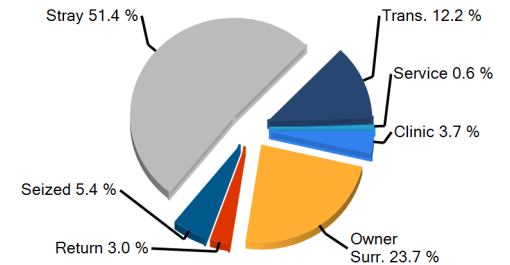
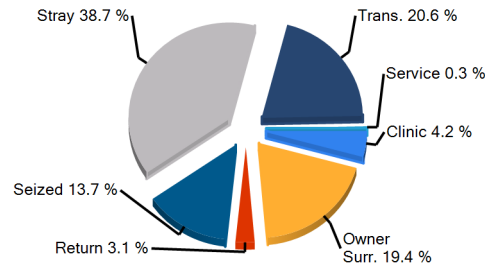
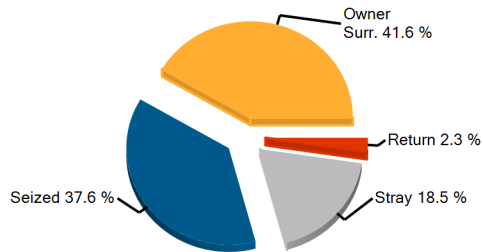
*does not include your shelter's data*

*does not include your shelter's data*

USGA68

Lumpkin County Animal Shelter & PAWS Humane Society

	Your Shelter					Georgia (88 organizations)					United States (1706 organizations)				
	Dog		Cat		Other	Dog		Cat		Other	Dog		Cat		Other
	< year	year+	< year	year+		< year	year+	< year	year+		< year	year+	< year	year+	
<b>Intake Type</b>															
Clinic	0	0	0	0	0	1991	8337	1153	2151	0	50692	156090	49783	95423	445
Owner Surrender	184	177	350	119	0	16257	18854	15724	11197	429	361336	563753	592893	659029	105640
Return	47	0	0	0	0	3476	4194	567	1599	8	39562	119180	31819	93708	2929
Seized	322	302	41	85	0	5823	20033	2955	11733	3631	56419	233882	62528	117866	44608
Service	0	0	0	0	0	125	714	1	93	0	787	4974	5717	3990	440
Stray	89	124	112	44	0	31624	40071	31137	21335	500	759092	1201209	1414074	1469241	101994
Transfer	0	0	0	0	0	25867	22011	10641	7962	14	281653	414763	280769	182335	18181
Wildlife	0	0	0	0	0	0	0	0	0	127	0	0	0	0	38855
<b>Total</b>	<b>642</b>	<b>603</b>	<b>503</b>	<b>248</b>	<b>0</b>	<b>85163</b>	<b>114213</b>	<b>62178</b>	<b>56071</b>	<b>4709</b>	<b>1549540</b>	<b>2693851</b>	<b>2437583</b>	<b>2621591</b>	<b>313092</b>



Earliest entry: 8/1/2011

Latest entry: 8/31/2011

Daily Use Date: 9/21/2009

Run Date: 9/7/2011 3:27:43 PM





## Shelter Statistics – Animal Care Days by Outcome Type

Start Date: August 01, 2011

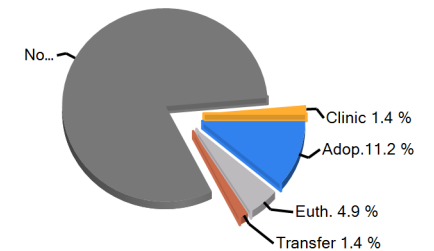
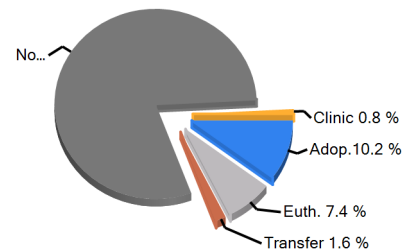
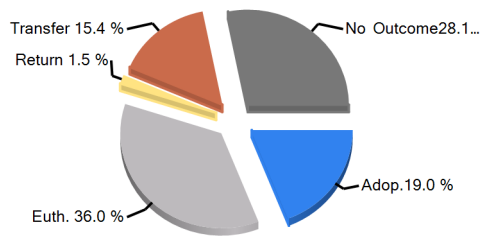
End Date: August 31, 2011

USGA68  
Lumpkin County Animal Shelter & PAWS Humane Society

*does not include your shelter's data*

*does not include your shelter's data*

Outcome Type	Your Shelter					Georgia (88 organizations)					United States (1706 organizations)				
	Dog		Cat		Other	Dog		Cat		Other	Dog		Cat		Other
	< year	year+	< year	year+		< year	year+	< year	year+		< year	year+	< year	year+	
Adoption	126	97	117	39	0	12000	7660	9168	3927	206	228406	251416	382417	184878	28156
Clinic	0	0	0	0	0	7	17	8	12	0	2421	5544	3790	7028	25
Died	0	0	0	0	0	826	294	410	225	5	9765	6590	22794	10829	1814
Euthanasia	176	128	300	114	0	3548	8813	4627	6872	91	50449	145869	107138	162863	5621
Missing	0	0	0	0	0	0	46	0	5	0	1651	6557	1918	6374	838
Return To Owner	0	30	0	0	0	110	538	8	119	1	3639	23487	3089	5195	742
Service	0	0	0	0	0	1	1	1	0	0	101	409	704	786	3
Transfer	151	156	0	0	0	1845	1665	1021	616	84	37279	50701	20437	19906	7360
Wildlife	0	0	0	0	0	0	0	0	0	0	0	0	0	0	7844
No Outcome	188	192	86	95	0	66825	95180	46935	44294	4322	1215828	2203278	1895296	2223730	260688
<b>Total</b>	<b>642</b>	<b>603</b>	<b>503</b>	<b>248</b>	<b>0</b>	<b>85163</b>	<b>114213</b>	<b>62178</b>	<b>56071</b>	<b>4709</b>	<b>1549540</b>	<b>2693851</b>	<b>2437583</b>	<b>2621591</b>	<b>313092</b>



Earliest entry: 8/1/2011

Latest entry: 8/31/2011

Daily Use Date: 9/21/2009

Run Date: 9/7/2011 3:27:43 PM





# Shelter Statistics - Fees and Revenue

Start Date: August 01, 2011  
End Date: August 31, 2011

USGA68  
Lumpkin County Animal Shelter & PAWS Humane Society

*does not include your shelter's data*

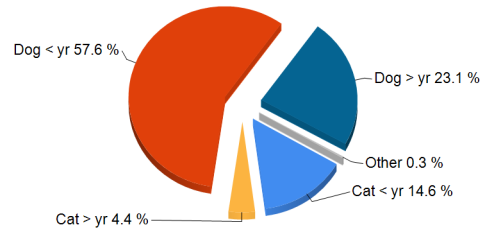
*does not include your shelter's data*

	Your Shelter					Georgia (88 organizations)					United States (1706 organizations)				
	Dog		Cat		Other	Dog		Cat		Other	Dog		Cat		Other
	< year	year+	< year	year+		< year	year+	< year	year+		< year	year+	< year	year+	
<b>Intake Revenue</b>															
<b>Fees</b>															
Avg Fees (\$)	25	45	0	0	0	46	37	55	41	0	28	39	25	33	18
Total Revenue (\$)	25	45	0	0	0	1,805	1,026	220	575	0	25,016	132,934	21,368	108,689	5,614
<b>Adoption Revenue</b>															
<b>Fees</b>															
Avg Fees (\$)	90	90	43	52	0	124	111	83	77	39	131	92	72	40	26
Total Revenue (\$)	360	180	130	155	0	48,925	19,605	12,356	3,768	235	1,094,755	1,055,721	693,203	293,445	28,239

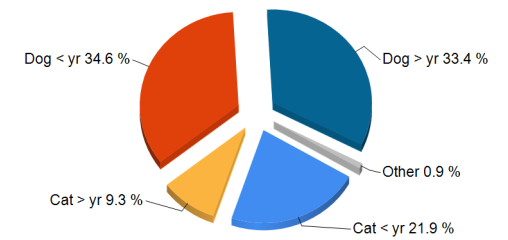
**Total Adoption Revenue**



**Total Adoption Revenue**



**Total Adoption Revenue**



Earliest entry: 8/1/2011  
Latest entry: 8/31/2011

Daily Use Date: 9/21/2009  
Run Date: 9/7/2011 3:27:43 PM





USGA68

## Pethealth's Contribution to Lumpkin County Animal Shelter & PAWS Humane Society

ShelterCare Gift of Insurance Claims Paid*:	\$0
ShelterCare Insurance Enrollment Costs*:	\$0
24PetWatch Registration Savings:	\$0
PetPoint Software Value:	\$200
<b>Total Pethealth Investment 8/1/2011 - 8/31/2011</b>	<b>\$200</b>

*\*For ShelterCare Gifts issued via PetPoint*

Earliest entry: 8/1/2011  
Latest entry: 8/31/2011

Daily Use Date: 9/21/2009  
Run Date: 9/7/2011 3:27:43 PM

EMPOWERING ANIMAL WELFARE THROUGH DATA MANAGEMENT



# Daily Count Report

Print Date **Wednesday, September 07, 2011**

Inventory Start Date **8/1/2011 12:00 AM**  
Inventory End Date **8/31/2011 11:59 PM**  
Species **All**  
Primary Breed **All**  
Age Group **All**  
Intake Type **All**  
Intake Subtype **All**  
Outcome Type **All**  
Outcome Subtype **All**  
Site **All**

	<b>Cat</b>	<b>Dog</b>	<b>Total</b>
<b>8/1/2011</b>	29	50	79
<b>8/2/2011</b>	26	48	74
<b>8/3/2011</b>	26	38	64
<b>8/4/2011</b>	29	39	68
<b>8/5/2011</b>	25	42	67
<b>8/6/2011</b>	30	42	72
<b>8/7/2011</b>	30	41	71
<b>8/8/2011</b>	30	46	76
<b>8/9/2011</b>	23	51	74
<b>8/10/2011</b>	40	44	84
<b>8/11/2011</b>	41	50	91
<b>8/12/2011</b>	44	51	95
<b>8/13/2011</b>	26	46	72
<b>8/14/2011</b>	24	42	66
<b>8/15/2011</b>	24	44	68
<b>8/16/2011</b>	20	41	61

	<b>Cat</b>	<b>Dog</b>	<b>Total</b>
<b>8/17/2011</b>	23	36	59
<b>8/18/2011</b>	28	36	64
<b>8/19/2011</b>	34	38	72
<b>8/20/2011</b>	35	39	74
<b>8/21/2011</b>	26	32	58
<b>8/22/2011</b>	16	32	48
<b>8/23/2011</b>	19	36	55
<b>8/24/2011</b>	26	45	71
<b>8/25/2011</b>	27	47	74
<b>8/26/2011</b>	33	51	84
<b>8/27/2011</b>	31	46	77
<b>8/28/2011</b>	29	46	75
<b>8/29/2011</b>	37	48	85
<b>8/30/2011</b>	22	39	61
<b>8/31/2011</b>	30	42	72
<b>Total</b>	883	1328	2211

<b>Species</b>	<b>Average</b>
<b>Cat</b>	<b>28.48</b>
<b>Dog</b>	<b>42.84</b>