



Lumpkin County Elections & Voter Registration Office

99 Courthouse Hill, Suite G

Dahlonega, GA 30533

phone (706)864-6279

fax (706)864-0731

e-mail: elections@lumpkincounty.gov

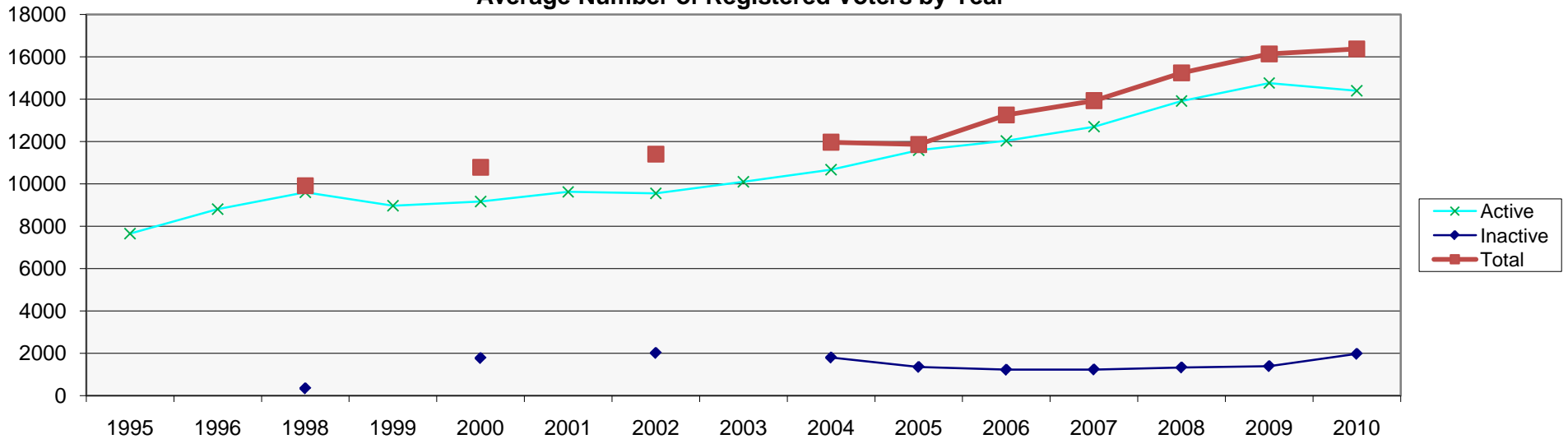
www.lumpkincounty.gov

Department Annual Report 2010

Registration Activity	Jan 10	Feb 10	Mar 10	Apr 10	May 10	Jun 10	Jul 10	Aug 10	Sep 10	Oct 10	Nov 10	Dec 10	Mo Avg	Total Yr
New Voters	71	63	112	19	1	235	0	224	118	47	5	281	98.0	1176
Deleted Voters	70	55	132	146	37	94	3	73	59	111	4	108	74.3	892
Changes (address/name)	20	25	92	18	9	118	7	122	57	21	28	226	61.9	743
Other (duplicate/corrections/etc)	21	100	91	6	48	58	43	64	46	46	59	74	54.7	656
Issue Photo ID Card	4	2	2	2	1	1	2	2	0	0	2	1	1.6	19
Totals	186	245	429	191	96	506	55	485	280	225	98	690	290.5	3486

Voters	Jan 10	Feb 10	Mar 10	Apr 10	May 10	Jun 10	Jul 10	Aug 10	Sep 10	Oct 10	Nov 10	Dec 10	Mo Avg	% Yrly Incr	Incr/Yr
Active	14,442	14,488	14,510	14,521	14,087	14,078	14,256	14,267	14,453	14,530	14,541	14,587	14396.7	1.0%	145
Inactive	1,841	1,831	1,818	1,795	2,136	2,111	2,090	2,076	2,049	2,018	1,973	1,928	1972.2	4.7%	87
Total	16,283	16,319	16,328	16,316	16,223	16,189	16,346	16,343	16,502	16,548	16,514	16,515	16368.8	1.4%	232

Average Number of Registered Voters by Year



- The number of new voters in Lumpkin County was increasing at a rate of 1,000 per year. 2006-2007 increased 1,030, 2007-2008 increased 1,617, 2008-2009 increased only 226, and 2009-2010 increased only 276. The trend has slowed since 2008, apparently coinciding with the slowing of the economy. We have fewer people moving into the county; therefore we have fewer new voters.
- The increase in inactive voters is due to having voters on the roles that have not voted in the past two general elections, but have not been inactive the required three additional years for the state to automatically remove them from the voter list. If they have moved and we have returned mail with an inadequate address, the voters go on to the hearing list for the Board of Elections & Registration to decide on their removal.

Elections

2010 Elections	Active Voters	Early Voting Days	Early Voters	Absentee Mailed Out	Absentee Mailed Rec'd	Votes Prior to Election	Polls	Provisional	Total Votes Cast	% Turnout	% Abs/Early	% Polls
5 11 10 Special Election	14,086	20	221	176	115	336	1,477	0	1,813	12.9%	18.5%	81.5%
6 8 10 Special Runoff	14,049	10	180	172	104	284	1,238	0	1,522	10.8%	18.7%	81.3%
7 20 10 Primary Election	14,255	29	544	196	146	690	3,123	4	3,817	26.8%	18.1%	81.9%
8 10 10 Primary Runoff	14,267	5	484	168	100	584	2,577	1	3,162	22.2%	18.5%	81.5%
11 2 10 General Election	14,541	30	2,311	476	397	2,708	5,556	13	8,277	56.9%	32.7%	67.3%
11 30 10 General Runoff	14,587	5	53	198	65	118	452	0	570	3.9%	20.7%	79.3%
Totals		99	3,793	1,386	927	4,720	14,423	18	19,161	N/A	24.6%	75.4%

- Organized, planned and held six elections. Lumpkin County has not held six elections, on record, in any given year until 2010. Voter turnout was much smaller than the presidential election cycle and this year broke the past two years' trend of early/absentee voters outnumbering the voters at the polls. Early voting and absentee processing took 40% of the 250 workdays in 2010. Despite the low turnout, the election preparations required the same amount of time and effort to fulfill.
- Inspected by Secretary of State Investigators during Early Voting and Election Days for all six elections with no reported errors or issues.

Voter Outreach and Education

- Continued to update and promote our web page for public information. Information, links, forms and resources are posted for voters, candidates and elected officials. Poll worker training materials, schedules and forms are posted. All upcoming election events are posted with sample ballots, Early Voting schedules and precinct locations. All Board of Elections & Registration meeting announcements, agendas and minutes are posted. All proposed changes and approved changes of polling places or precincts are posted. Voter registration statistics and voter turnout statistics are posted from the 1980's to present. Added the ability to locate the Board of Commissioners/Education District based upon residential address on 3/15/10. Added candidate qualifying requirements and forms on 4/29/10.
- Held the Lumpkin County High School Student Government Elections for 2010-2011 school year with 580 students participating and learning first-hand about the voting process, serving as poll workers and encouraging their participation in the democratic process, 5/18/10.
- Held a voter registration drive in conjunction with the Senior Center's Life & Wellness Annual Expo, 4/3/10.
- Held a voter registration drive at NGCSU in tandem with a Meet & Greet the Candidates Forum, 4/7/10.
- Presented on voter registration and how to host a voter registration drive to a Foundations of Leadership Class at NGCSU, 9/21/10.

Internal Processes and Procedures

- Developed and implemented a new voter registration application process in order to comply with state changes using a flow chart and detailed guide.
- Created a daily/weekly/monthly task list of all required state and county processes and reports in order to ensure all required tasks are complete and to guide the Supervisor of Elections & Chief Registrar on a daily basis.
- Updated and improved the daily/weekly/monthly task list for the Election & Voter Registration Technician including new state procedures and reports.
- Created a continuity manual for the Supervisor of Elections & Chief Registrar position having all web based resources and daily/weekly/monthly/yearly tasks described.

Election Processes and Procedures

- Implemented the use of state purchased/mandated ID scanners which allow voters with a Georgia Drivers License or ID card to be automatically found on the ExpressPolls without manual entry, speeding up the voter in processing time on Election Day, 11/2/2010.
- Created a summary step guide for logic and accuracy testing in order to speed up the process and reduce confusion of those performing the testing.
- Pursued consolidating Porter Springs and Crumby in order to reduce costs, supplies and staff; however there was not enough time for the change prior to the April called special election (later moved to May).
- Implemented the use of table top provisional stations in order to save space and increase stability and usability for voters and poll workers.
- Created and updated Election Day form guides and procedure guides for poll workers in order to increase accuracy and decrease confusion: DRE Recap, ExpressPoll Recap, Provisional Recap and Binder Close-out Checklists.
- Created a label merge document which speeds up the election consolidation of returns process and ensures the correct paperwork is delivered to the correct entities: Secretary of State, Clerk of Court and our office. This has reduced consolidation time by several hours for large elections and by days for smaller elections.
- Created Early Voting poll worker schedules limiting poll workers to no more than three days per week in order to reduce poll worker burnout and conflicts which were having an effect on voter services and taking up much of the election prep time of office staff.
- Implemented the use of stanchions at the polling places in order to comply with election law.
- Improved the quality assurance round check lists performed on Election Day in order to ensure elections are performed in compliance with all election law and State Election Board Rules.

Budget and Cost Reduction

- Maintained a balanced budget. There was a \$15,000 supplemental budget adjustment in order to cover the two unbudgeted special elections. However, even after taking out the \$15,000 supplement, there are over \$32,000 in funds remaining.
- Reduced the Election & Voter Registration Technician position to part time during non-election years.

Training

- Attended the state mandated Georgia Election Officials Association Annual Training (1.2 CE Units), 4/18-4/21/10.
- Attended the state mandated Voter Registrar Association of Georgia Annual Training (1.2 CE Units), 5/23-5/26/10.
- Attended the state mandated Secretary of State Elections Division Regional Meetings on 3/12/10 and 9/10/10.
- Attended monthly web training meetings held by the Secretary of State Elections Division on the third Thursday.
- Train weekly to monthly on the Secretary of State Elections Division on-line training system e-Learn on all election processes, rules and changes.